

Global patterns of kelp forest change over the past half-century

Kira A. Krumhansl^{a,1}, Daniel K. Okamoto^a, Andrew Rassweiler^b, Mark Novak^c, John J. Bolton^d, Kyle C. Cavanaugh^e, Sean D. Connell^f, Craig R. Johnson^g, Brenda Konar^h, Scott D. Ling^g, Fiorenza Micheliⁱ, Kjell M. Norderhaug^j, Alejandro Pérez-Matus^k, Isabel Sousa-Pinto^{l,m}, Daniel C. Reedⁿ, Anne K. Salomon^a, Nick T. Shears^o, Thomas Wernberg^{p,q}, Robert J. Anderson^{d,r}, Nevell S. Barrett^g, Alejandro H. Buschmann^{s,t}, Mark H. Carr^u, Jennifer E. Caselleⁿ, Sandrine Derrien-Courtel^v, Graham J. Edgar^g, Matt Edwards^w, James A. Estes^u, Claire Goodwin^x, Michael C. Kenner^u, David J. Kushner^y, Frithjof E. Moy^z, Julia Nunn^x, Robert S. Steneck^{aa}, Julio Vásquez^{bb}, Jane Watson^{cc}, Jon D. Witman^{dd}, and Jarrett E. K. Byrnes^{ee}

^aSchool of Resource and Environmental Management, Hakai Institute, Simon Fraser University, Burnaby, BC, Canada V5A 1S6; ^bDepartment of Biological Science, Florida State University, Tallahassee, FL 32306; ^cDepartment of Integrative Biology, Oregon State University, Corvallis, OR 97331; ^dDepartment of Biological Sciences and Marine Research Institute, University of Cape Town, 7701 Rondebosch, South Africa; ^eDepartment of Geography, University of California, Los Angeles, CA 90095; ^fSouthern Seas Ecology Laboratories, The Environment Institute, The University of Adelaide, Adelaide, SA 5005, Australia; ^gInstitute for Marine and Antarctic Studies, University of Tasmania, Hobart, 7001 TAS, Australia; ^hCollege of Fisheries and Ocean Sciences, University of Alaska, Fairbanks, AK 99775; ⁱHopkins Marine Station, Stanford University, Pacific Grove, CA 93950; ^jNorwegian Institute for Water Research, 0349 Oslo, Norway; ^kSubtidal Ecology Laboratory and Marine Conservation Center, Estación Costera de Investigaciones Marinas, Facultad de Ciencias Biológicas, Pontificia Universidad Católica de Chile, Casilla 114-D, Santiago, Chile; ^lInterdisciplinary Centre for Marine and Environmental Research, 4450-208 Matosinhos, Portugal; ^mDepartment of Biology, Faculty of Sciences, University of Porto, 4169-007 Porto, Portugal; ⁿMarine Science Institute, University of California, Santa Barbara, CA 93106; ^oLeigh Marine Laboratory, Institute of Marine Science, The University of Auckland, Auckland 0941, New Zealand; ^pOceans Institute, University of Western Australia, Perth, WA 6009, Australia; ^qSchool of Biological Sciences, University of Western Australia, Perth, WA 6009, Australia; ^rDepartment of Agriculture, Forestry and Fisheries, Roggebaai 8012, South Africa; ^sCentro de Investigación y Desarrollo en Recursos y Ambientes Costeros, Universidad de Los Lagos, Puerto Montt 5480000, Chile; ^tCentro de Biotecnología y Bioingeniería, Universidad de Los Lagos, Puerto Montt 5480000, Chile; ^uDepartment of Ecology and Evolutionary Biology, University of California, Santa Cruz, CA 95064; ^vMuséum National d'Histoire Naturelle, Station Marine de Concarneau, 29182 Concarneau Cedex, France; ^wDepartment of Biology, San Diego State University, San Diego, CA 92182; ^xCentre for Environmental Data and Recording, National Museums Northern Ireland, Holywood, Co. Down BT18 0EU, United Kingdom; ^yChannel Islands National Park, Ventura, CA 93009; ^zInstitute of Marine Research, 4817 His, Norway; ^{aa}School of Marine Sciences, University of Maine, Walpole, ME 04573; ^{bb}Departamento de Biología Marina, Universidad Católica del Norte, Coquimbo 1781421, Chile; ^{cc}Biology Department, Vancouver Island University, Nanaimo, BC, Canada V9R 5S5; ^{dd}Ecology and Evolutionary Biology, Brown University, Providence, RI 02912; and ^{ee}Department of Biology, University of Massachusetts, Boston, MA 02125

Edited by Michael H. Graham, Moss Landing Marine Laboratories, Moss Landing, CA, and accepted by Editorial Board Member David W. Schindler October 3, 2016 (received for review April 15, 2016)

Kelp forests (Order Laminariales) form key biogenic habitats in coastal regions of temperate and Arctic seas worldwide, providing ecosystem services valued in the range of billions of dollars annually. Although local evidence suggests that kelp forests are increasingly threatened by a variety of stressors, no comprehensive global analysis of change in kelp abundances currently exists. Here, we build and analyze a global database of kelp time series spanning the past half-century to assess regional and global trends in kelp abundances. We detected a high degree of geographic variation in trends, with regional variability in the direction and magnitude of change far exceeding a small global average decline (instantaneous rate of change = -0.018 y^{-1}). Our analysis identified declines in 38% of ecoregions for which there are data (-0.015 to -0.18 y^{-1}), increases in 27% of ecoregions (0.015 to 0.11 y^{-1}), and no detectable change in 35% of ecoregions. These spatially variable trajectories reflected regional differences in the drivers of change, uncertainty in some regions owing to poor spatial and temporal data coverage, and the dynamic nature of kelp populations. We conclude that although global drivers could be affecting kelp forests at multiple scales, local stressors and regional variation in the effects of these drivers dominate kelp dynamics, in contrast to many other marine and terrestrial foundation species.

kelp forest | Laminariales | global change | climate change | coastal ecosystems

Assessing ecosystem change on a global scale has been instrumental in highlighting the magnitude of human impacts on natural ecosystems. For example, awareness of global declines in fish populations (1), coral reefs (2), and tropical rainforests (3) has substantially increased public interest and subsequent political motivation for environmental conservation. In some cases, global assessments have highlighted complex patterns of change (4, 5), which often reflect variable trajectories among regions (4).

Significance

Kelp forests support diverse and productive ecological communities throughout temperate and arctic regions worldwide, providing numerous ecosystem services to humans. Literature suggests that kelp forests are increasingly threatened by a variety of human impacts, including climate change, overfishing, and direct harvest. We provide the first globally comprehensive analysis of kelp forest change over the past 50 y, identifying a high degree of variation in the magnitude and direction of change across the geographic range of kelps. These results suggest region-specific responses to global change, with local drivers playing an important role in driving patterns of kelp abundance. Increased monitoring aimed at understanding regional kelp forest dynamics is likely to prove most effective for the adaptive management of these important ecosystems.

Author contributions: K.A.K., D.K.O., A.R., M.N., J.J.B., K.C.C., S.D.C., C.R.J., B.K., S.D.L., K.M.N., A.P.-M., I.S.-P., A.K.S., N.T.S., T.W., and J.E.K.B. conceptualized research; K.A.K., D.K.O., A.R., M.N., and J.E.K.B. designed and performed research; D.K.O. designed and executed Bayesian analysis; K.A.K. and D.K.O. wrote the paper; and A.R., J.J.B., S.D.C., B.K., S.D.L., F.M., K.M.N., A.P.-M., I.S.-P., D.C.R., A.K.S., N.T.S., T.W., R.J.A., N.S.B., A.H.B., M.H.C., J.E.C., S.D.-C., G.J.E., M.E., J.A.E., C.G., M.C.K., D.J.K., F.E.M., J.N., R.S.S., J.V., J.W., and J.D.W. contributed data and provided input on the manuscript.

The authors declare no conflict of interest.

This article is a PNAS Direct Submission. M.H.G. is a Guest Editor invited by the Editorial Board.

Freely available online through the PNAS open access option.

Data deposition: The global database of kelp abundance time series has been published on the Kelp Ecosystem Ecology Network website (www.kelpecosystems.org/data/), and on the Temperate Reef Base website (temperatereefbase.imas.utas.edu.au/portal/search?uiid=ecbe5cc3-3fbf-4569-b5e8-07c2201fcb9c). All data processing, analysis, and visualization R code have been made available via GitHub (https://github.com/kelpecosystems/global_kelp_time_series).

¹To whom correspondence should be addressed. Email: kkrumhan@sfu.ca.

This article contains supporting information online at www.pnas.org/lookup/suppl/doi:10.1073/pnas.1606102113/-DCSupplemental.

However, even where clear global declines have been detected, trajectories of change are often not uniform in direction and magnitude among regions (e.g., ref. 6). Examining patterns of regional change can provide important insights into the mechanisms underlying global change, and lead to more specific recommendations for local and regional management actions aimed at reversing or lessening further ecosystem degradation (7). Such regional insights are particularly useful, as local and regional stressors may be more amenable to management and conservation actions than global stressors (8).

Global declines have been documented in a number of marine habitat-forming or “foundation” species (*sensu* ref. 9), including seagrasses, corals, and oysters (2, 6, 10). The loss of these species often leads to a direct reduction in ecosystem services critical to human well-being (11–13), and the local demise of taxa that provide those services (14, 15). The brown algae known as kelps (Order Laminariales) are globally important foundation species that occupy 43% of the world’s marine ecoregions (defined in ref. 16) along coastlines of all continents except Antarctica. Kelps are useful sentinels of change because they are highly responsive to environmental conditions (17, 18), and are directly exposed to many human activities that impact the coastal zone (e.g., harvesting, pollution, sedimentation, invasive species, fishing, recreation) (19). Kelps are among the most prolific primary producers on the planet, supporting productivity per unit area rivaling that of intensively cultivated agricultural fields and tropical rainforests (20, 21). Kelps enhance diversity and secondary productivity locally through the formation of biogenic habitat (22, 23), and over broad spatial scales via detrital subsidies (24). Kelp forests support numerous ecosystem services, including commercial fisheries, nutrient cycling, and shoreline protection, valued in the range of billions of dollars annually (19, 25, 26). Consequently, changes in the global abundance of kelps would have far reaching impacts on ecosystem health and services.

Historically, kelp forest ecosystems have demonstrated a high degree of resilience (27, 28), but recent evidence suggests that the capacity of kelp forests to recover from disturbance may be eroding (29, 30). Kelp forest declines have now been documented in many regions in response to a variety of stressors (18, 31–35), but kelp abundances have been stable or increasing in other areas (17, 36, 37). Here, we amass a global database of kelp abundances to provide a comprehensive picture of kelp forest change. Specifically, we assess the evidence for two possible patterns: (i) coherent patterns of change across the global range of kelps, with a global average trend that is large relative to regional variability, or (ii) regional variability that is far larger than any global trend. The former pattern would suggest that global stressors are the main driver of kelp forest dynamics, whereas the latter pattern indicates a dominant influence of regional drivers or region-specific responses to global drivers of change. The results of our analysis provide key insights into the trajectory of one of the world’s most productive ecosystems.

Results

Our database contains data from 34 of the 99 global ecoregions where kelps exist, covering a large portion of the temperate range of kelps as well as a few Arctic areas (Fig. 1). Our analysis revealed that trajectories of change in kelp abundances were highly variable across regions (Figs. 2 and 3 and *SI Appendix, Figs. S1 and S2*). Using all available data across the greatest time span for each ecoregion, we estimated a high probability of decline ($\geq 95\%$) in kelp abundances for Central Chile (instantaneous rate of change = -0.150 , $n = 7$ sites from 2004 to 2013), the Aleutian Islands (-0.071 , $n = 147$ sites from 1987 to 2010), the South Australian Gulfs (-0.059 , $n = 22$ sites from 1968 to 2012), the North Sea (-0.024 , $n = 33$ sites from 1975 to 2013), North-Central California (-0.019 , $n = 116$ sites from 1973 to 2012), and the Bassian ecoregion (-0.015 , $n = 121$ sites from 1992 to 2012) (Figs. 2 and 3 and *SI Appendix, Figs. S1 and S2*). High-magnitude declines were also inferred for the Agulhas Bank

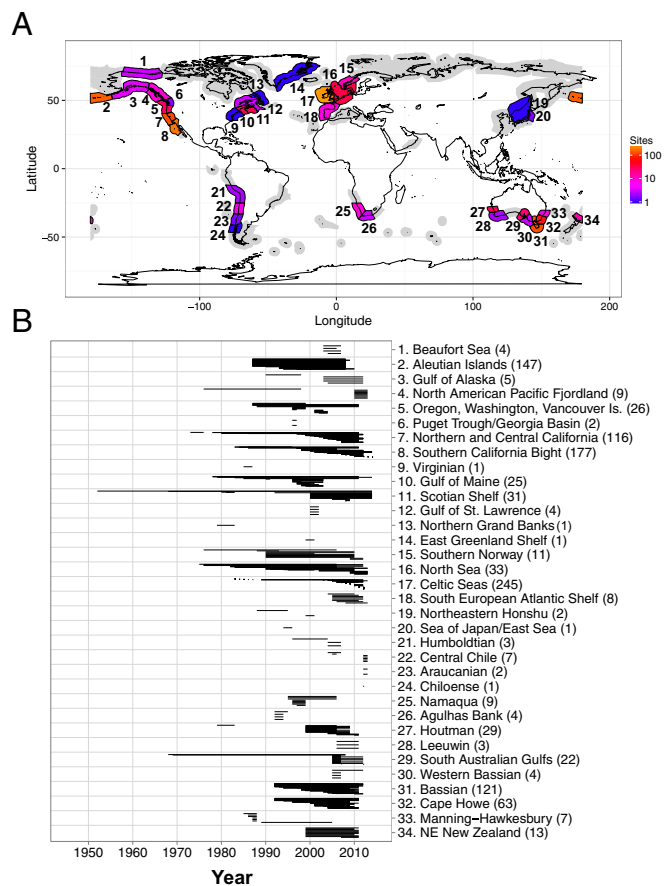


Fig. 1. (A) Number of sites in the dataset ($n = 1,454$) by ecoregion (16). Gray shading indicates ecoregions where kelps are present but for which no data were available. (B) Range of dates within each study within each ecoregion, with line shading indicating the weight of studies within that range.

(-0.177 , $n = 4$ sites from 1992 to 1995) and Humboldt (-0.073 , $n = 3$ sites from 1996 to 2007) ecoregions, but there is greater uncertainty in these trends. There was also evidence for a small overall decline in the Gulf of Maine (93% probability, -0.028 , $n = 25$ sites from 1978 to 2014) and the Scotian Shelf (83% probability, -0.020 , $n = 31$ sites from 1952 to 2014) ecoregions, but, again, these trends were associated with higher uncertainty (Figs. 2 and 3 and *SI Appendix, Figs. S1 and S2*). When data were partitioned by decade, our analysis identified a high probability of decline in kelps from 2003 to 2012 in the South Australian Gulfs (-0.092) and the Bassian ecoregion (-0.015); from 1993 to 2002 in the Aleutian Islands (-0.098), Cape Howe (-0.080), Gulf of Maine (-0.036), and Bassian (-0.022) ecoregions; and from 1983 to 1992 in the Manning–Hawkesbury ecoregion (-0.280) (Fig. 2).

We identified three ecoregions where there was a high probability of increases in kelp abundance over the time periods for which we have data (Figs. 2 and 3 and *SI Appendix, Figs. S1 and S2*): the South European Atlantic Shelf (instantaneous rate of change = 0.114 , $n = 8$ sites from 2004 to 2013), the Southern California Bight (0.018 , $n = 178$ sites from 1980 to 2014), and Namaqua (0.104 , $n = 9$ sites from 1995 to 2006). Relatively high-magnitude increases were also inferred for the Gulf of St. Lawrence (0.072 , $n = 4$ sites from 2000 to 2002), North American Pacific Fjordland (0.043 , $n = 9$ sites from 1976 to 2013), Beaufort Sea (0.027 , $n = 4$ sites from 2003 to 2007), and Northeastern New Zealand (0.026 , $n = 13$ sites from 1999 to 2011) ecoregions, but there was greater uncertainty in these trends (Figs. 2 and 3 and *SI Appendix, Figs. S1 and S2*). When data were partitioned by decade, high-probability increases were inferred from

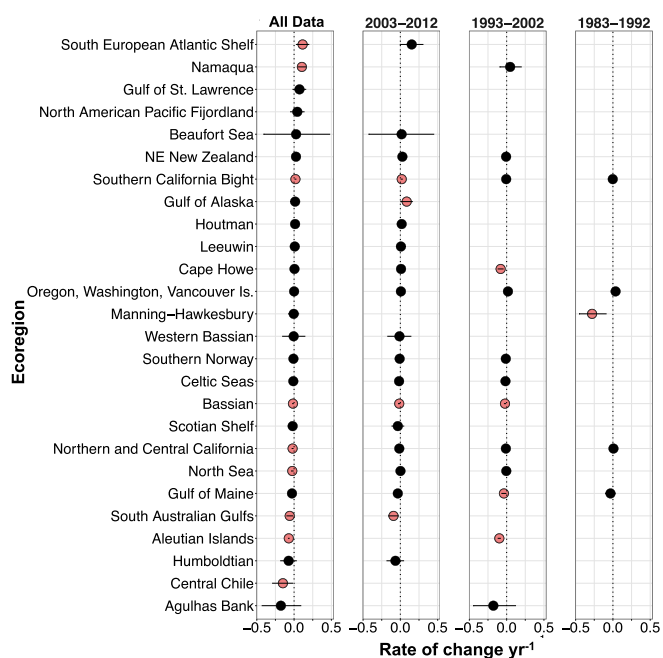


Fig. 2. Modeled ecoregion slopes (instantaneous rate of change per year) and 90% credible intervals for the full dataset ($n = 8,846$ data points from 26 ecoregions), with variable temporal coverage in each ecoregion, and by decade (1983–1992, 1993–2002, and 2003–2012). Ecoregion means are colored red if the 90% credible intervals (i.e., high probability) do not overlap zero.

2003 to 2012 in the Gulf of Alaska (0.085) and Southern California Bight (0.018) (Fig. 2). Large uncertainty in the posterior rate estimates of the remaining ecoregions precluded conclusions regarding the direction of trends (Figs. 2 and 3 and *SI Appendix*, Figs. S1 and S2). As a result, 35% of ecoregions were inferred not to exhibit strong evidence of a directional change.

Our analysis detected a global average decline (i.e., the mean of site-level slopes is negative, instantaneous rate of change = -0.018 yr^{-1} , $n = 1,138$ sites from 1952 to 2015) (Fig. 4) that was an order of magnitude smaller than the largest proportional rate of change observed regionally (-0.177 yr^{-1} in Agulhas Bank). Although the majority of the dataset was composed of relatively short-duration studies (71% were <20 y in duration) (*SI Appendix*, Fig. S3), the negative global trend detected by our analysis was most strongly influenced by declines detected in datasets that were collected over time periods longer than 20 y (*SI Appendix*, Fig. S4) in 10 ecoregions (Scotian Shelf, South Australian Gulfs, North Sea, Gulf of Maine, North-Central California, Celtic Seas, North Sea, Southern California Bight,

Aleutian Islands, and Southern Norway). Slope estimates associated with time series shorter than 20 y had higher variability, and more commonly showed no directional change (*SI Appendix*, Fig. S4). The global average trend was also most strongly influenced by ecoregions with the most data (i.e., the Aleutian Islands, North-Central California, Southern California Bight, Bassian, Cape Howe, Celtic Seas), and therefore may not be representative of large portions of the range of kelp where data were missing entirely (i.e., Eastern Canadian Arctic and West Greenland Shelf, the Russian Arctic, Cold Temperate Northwest Pacific, Southern Chile and the Patagonian Shelf, Sahara Upwelling, Eastern Bering Sea, Southern New Zealand, Great Australian Bight) (Fig. 1), or where data were sparse through time and across space (Figs. 1 and 2). Furthermore, although the earliest data were collected in 1952, the bulk of available data were collected from the 1990s to the present (Fig. 1 and *SI Appendix*, Fig. S3), with the temporal distribution of available data differing by ecoregion (Fig. 1).

Discussion

Global declines of a focal species group can indicate that the cumulative effects of single or multiple stressors are overwhelming the resilience of species throughout their range. The potential for this decline is considered more likely for species with slow postdisturbance recovery rates [e.g., corals (38)], those species that display little seasonal variability in abundance [e.g., mangroves (39)], or those species experiencing stressors of sufficiently widespread and high magnitude [e.g., fishes (1)]. However, for many taxa, globally coherent signals of change are unlikely when the identity and magnitude of drivers vary widely on local and regional scales (4, 17, 40), where species and ecotypes within taxonomic groups respond variably to change, or where abiotic and biotic contexts vary widely across geographic locations (41). The global average decline detected by our analysis was modest compared with the large interregional variability in the trajectories of change exhibited by kelps across their range. Many ecoregions did not exhibit evidence of directional change, and for those ecoregions that did, both declines and increases were evident at rates much larger than the global average. These findings suggest region-specific signals of global change, with local factors playing a dominant role in driving kelp forest dynamics.

Many kelp forest ecosystems are naturally highly variable on both seasonal and interannual time scales, and over small spatial scales (42–44), reflecting a high reactivity to environmental drivers and variation in their capacity to resist (45) and recover from both small- and large-scale disturbances (46, 47). This wide temporal variation contrasts with other marine foundation species such as seagrasses (48, 49) and corals (50), which tend to hold space for many years and take decades to recover from disturbance. For kelp, rapid recovery following catastrophic population losses is enabled by frequent recruitment and fast individual growth rates; indeed, kelps have some of the fastest

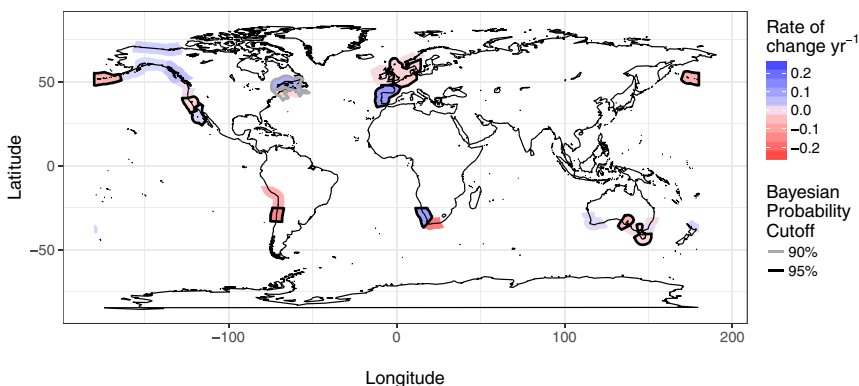


Fig. 3. Modeled slopes (instantaneous rate of change per year) and associated probability (Bayesian probability cutoff) for each ecoregion ($n = 8,846$ data points from 26 ecoregions). Slope magnitudes are shown as colored shading of ecoregions, whereas probability is demonstrated using the thickness of ecoregion outlines.

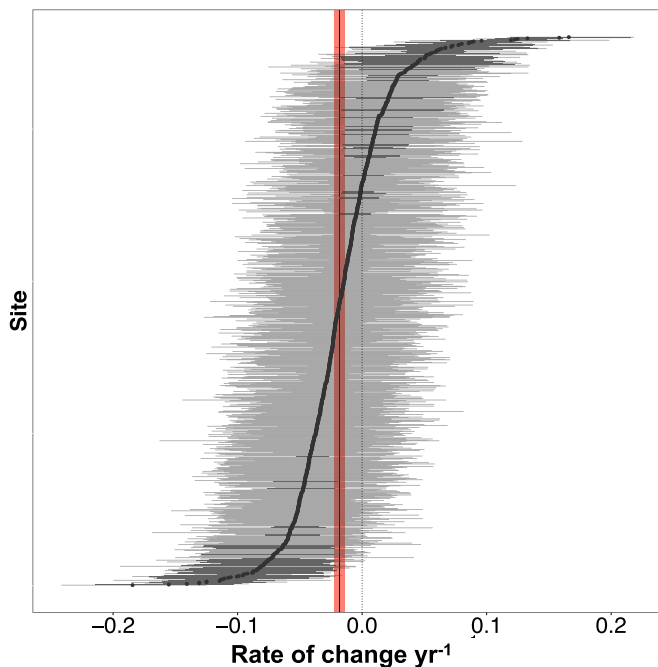


Fig. 4. Global distribution of modeled site level slopes (instantaneous rate of change per year) and 90% credible intervals ($n = 8,846$ data points from 26 ecoregions). The vertical black line shows the global mean slope, with the shaded band indicating the 90% credible interval, which does not overlap zero (i.e., >95% probability of decline).

growth rates of any primary producer on the planet (20, 21). The high degree of natural variability among kelp systems may also explain why detecting directional trends in kelp abundances is difficult in some regions of the globe; available time series tend to be short and variable compared with any long-term change that kelp forests may exhibit (51).

The regional variability in change detected by our analysis is also a reflection of the diversity of multiscaled stressors whose effects vary in direction and magnitude across the geographic range of kelp forests (52–54). In some cases, the results of our analysis are consistent with predictions regarding regional trends in temperature, with decreases in abundance in locations where water temperatures are warming (e.g., Bassian ecoregion, Gulf of Maine, Scotian Shelf) (32, 33) and increases where water temperatures are cooling (e.g., Western South Africa, Southern California Bight) (52, 55). In many instances, literature suggests that climate-driven temperature change is acting synergistically with other stressors, such as the fishing of sea urchin predators [Bassian ecoregion (7)], pollution [South Australian Gulfs (56)], and invasive species [Scotian Shelf (32)] to cause the kelp declines detected by our analysis. However, our analyses identified trajectories of change in some regions that were the opposite of the trajectories of change predicted by climate alone (e.g., decreases in central and Northern Chile, the Aleutian Islands), suggesting the overwhelming influences of other drivers. For example, kelp harvesting accounted for recent kelp declines in Central and Northern Chile despite a regional cooling trend (57). In other instances, regional increases in kelp (e.g., west coast of Vancouver Island, Southern California Bight) can be attributed to successful local management efforts, including the recovery of previously exploited sea urchin predators (58) and reductions in local pollution levels (59). Regional variation in the trajectories of kelp change was also influenced by the underlying frequency of sea urchin-driven phase shifts that characterize many kelp forest ecosystems (28, 30). For example, long-term declines in the Aleutians were associated with persistent shifts toward sea urchin barrens since the 1990s (60). Such long-term change in

kelp abundances may be obscured in systems that experience more frequent phase shifts, such as the Scotian Shelf (47) and Northern, Central, and Southern California (61–63). In some regions, identified trajectories were opposite to those trajectories documented in local studies (e.g., South European Atlantic Shelf, Western Australia) (64, 65). These discrepancies are likely a result of the short time series available for these regions, the greater ability of focused regional studies to pick up certain types of change (e.g., range changes, shifts in species composition), and/or the occurrence of discrete events that disrupt stability or gradual change (18).

We have compiled and analyzed the most comprehensive database of subtidal kelp abundance time series to date. However, there remains a high degree of uncertainty in the trajectory of change across the global range of kelps, with few to no data in many regions where kelp exists. Even in ecoregions where kelps have been sampled, datasets contain few sites and are characterized by inconsistent sampling over time. In particular, there is a noticeable lack of historical “baseline” data by which to benchmark change, with the majority of our data having been collected within the past 30 y. This data limitation is especially true for Arctic regions, where climate change impacts are anticipated to be highest (52). The decrease in the number of sites in our dataset in the past 5 y is also a potential cause for concern, although this decrease may partially reflect the exclusion of recently initiated monitoring programs that did not meet our criteria for inclusion (≥ 2 y in duration). Nonetheless, the reality is that the majority of subtidal research programs are short in duration due, in large part, to variable and unpredictable funding. Consequently, in some regions, there has been a clear shift in emphasis away from long-term monitoring for this key group of foundation species (25). Detecting future changes in kelp ecosystems at regional and global scales is best achieved by methodologically consistent, long-term monitoring efforts broadly distributed throughout all ecoregions (51). The use of aerial and satellite data to monitor changes in kelp canopies can help fill gaps in effort (17, 42), but these technologies are useful only for kelps that have surface canopies, whose current geographic distribution represents only about half of the total global extent of kelps.

Overall, our results show a high degree of variability within and among regions in the direction and magnitude of kelp forest change over the past half-century, with declines noted in just over a third of ecoregions included our analysis. This result is strikingly different from that reported for many other marine and terrestrial systems that are experiencing consistent declines in species abundance across the globe (1–3, 6) and, in many ways, highlights the atypical resilience of kelps. However, where kelp resilience is eroding and leading to declines in abundance (7, 18, 54, 64, 66, 67), impacts to ecosystem health and services can be far-reaching (19, 25, 26, 68, 69). Maintaining the resilience of kelp forest ecosystems into the future will rely on the continued monitoring of kelps and management of stressors on local and regional scales.

Materials and Methods

We compiled time series of diver-sampled kelp abundances from published and contributed datasets (*SI Appendix, Tables S1 and S2*). We also collected published datasets from a Web of Science search conducted in July–August 2013 and repeated in May 2014. The search terms we used were: kelp and loss, abundance, change, recovery, stability, decline, gain, time series, density, biomass, percent cover, and disturbance. We also used the terms increase and decrease in association with abundance, biomass, and density. This search returned a total of 4,490 results. We included studies if they had at least three measurements of diver-sampled abundance (quadrat, transect, or plot-scale) of a kelp species (Order Laminariales) that spanned more than 2 y. This literature search resulted in the inclusion of datasets from 48 published studies (*SI Appendix, Table S1*). We also requested datasets from the Kelp Ecosystem Ecology Network listserv (www.kelpecosystems.org) and from additional scientists identified by network members, and included these datasets if they met our criteria. Relevant measures of abundance were biomass density, individual density, stipe density, or percent cover. We note that these measures of abundance may not capture some range

contractions or losses of kelp bed area, depending on the local and regional sampling regime. However, they were chosen because they represent the longest time series available for the widest range of kelp species. Data using the SACFOR scale (S, superabundant; A, abundant; C, common; F, frequent; O, occasional; R, rare) from Europe were translated to corresponding abundances (70). Only data from subtidal kelps (>3-m depth) were included. Juvenile kelps (independently defined by data collectors) were excluded due to variable reporting of their abundances across datasets. The datasets included and their associated citations are listed in *SI Appendix, Tables S1 and S2*. Species included in each ecoregion are listed in *SI Appendix, Table S1*.

We compiled datasets into a single database representing time series of kelp abundance at a particular site (as defined by each author or data contributor). In some datasets, this series represented changes at the level of a population (single species), but, more commonly, this series represented a summed assemblage of multiple kelp species, the composition of which was made to remain consistent throughout the duration of each time series. We note that aggregating across species precludes us from detecting changes in kelp species composition within regions. We averaged abundance values at the site scale across all depths and replicate samples taken during a given sampling event, keeping the number of replicates consistent across sampling dates. For most trajectories, we averaged across sampling events that occurred within 45 d of one another to generate a single value, and treated that average as having occurred on the mean date of the combined sampling events. We aggregated samples from some datasets over time intervals other than 45 d to accommodate sampling regimes specific to particular studies (4 d, Southern Chile; 20 d, Nova Scotia and Northern Ireland; 31 d, Northern Chile; and 65 d Southern California).

We selected only one metric for analysis in instances where studies included multiple metrics of abundance (i.e., biomass density, individual density, stipe density, percent cover). For each trajectory, we analyzed the metric with the greatest number of sampling events. In the case of multiple metrics having the same number of samples, we selected the metric using the following hierarchy: biomass density (per square meter), stipe density (per square meter), individual density (per square meter), and percent cover.

We used Bayesian hierarchical linear models to estimate proportional rates of change in the dataset as a whole (1949–2015) and split by decade (1983–1992, 1993–2002, and 2003–2012). We note that similar results were achieved using a likelihood-based mixed-effects model framework. We discuss trends at the global and ecoregion levels only, because the analytical method used is not well suited to describing trends at sites where data are sparse. We grouped sites by ecoregion according to Spalding et al. (16). In each model, we simultaneously estimated a unique rate for each time series and for each chosen geographic region (with ecoregion or global subdivisions). We achieved this estimation by considering the rate for each unique time series as a random (normal) deviation from the mean rate within that geographic region. To account for study-level differences in uncertainty, we allowed for a unique error variance within each study within each geographic region.

The model describing the abundance of kelps at the *i*th site within the *j*th study within the *k*th geographic grouping (ecoregion or globe) at time *t* was

$$\mu_{k,j,i,t} = \beta_{0k} + \beta_{0k,i} + (\beta_{1k} + \gamma_{1k,i})x_{k,j,i,t}, \quad [1]$$

$$y_{k,j,i,t} \sim \text{lognormal}(\mu_{k,j,i,t}, \sigma_j), \quad [2]$$

where $x_{k,j,i,t}$ is the time in years, β_{0k} and β_{1k} are the geographic group level intercept and slope (on the log-scale), $\gamma_{0k,i}$ and $\gamma_{1k,i}$ are the site level deviations from β_{0k} and β_{1k} (respectively), σ_j is the error variance associated with each study, and $y_{k,j,i,t}$ is the kelp value standardized to the mean of the maximum three values in the specific ecoregion-focal unit combination as follows:

$$y_{k,j,i,t} = \text{ke}[\rho_{k,j,i,t} / \text{ecoregion-focal unit max} + 0.01]. \quad [3]$$

We used a hierarchical framework to account for site-level deviations from the geographic group-level mean parameters. This method is essential to account for among-site variability in trends while also estimating overall geographic group level mean trends (71). Thus, the site level deviations $\gamma_{0k,i}$ and $\gamma_{1k,i}$ were assumed to follow a multivariate normal (MVN) distribution:

$$[\gamma_{0k,i} \ \gamma_{1k,i}]^T \sim \text{MVN}(\mathbf{0}, \Sigma). \quad [4]$$

For numerical stability and efficiency, instead of estimating Σ directly, we used the Cholesky decomposition (*L*) of the correlation matrix (Ω) and the SD in intercept and slope among sites $\sigma_j = [\sigma_{j0} \ \sigma_{j1}]^T$ with a Lewandowski-Dorota-Joe (LKJ) prior in *L* (github.com/stan-dev/stan/releases/download/v2.7.0/stan-reference-2.7.0.pdf), where

$$\Sigma = \text{diagonal}(\sigma_j)\Omega. \quad [5]$$

$$\Omega = L \times L^T. \quad [6]$$

Priors and hyperpriors were as follows:

$$\gamma_{0k,i}, \gamma_{1k,i}, \beta_{0k}, \beta_{1k} \sim \text{uniform}[-\infty, \infty]. \quad [7]$$

$$\sigma_j \sim \text{half-Cauchy}(0, \nu_M). \quad [8]$$

$$\nu_M \sim \text{uniform}[0, 3]. \quad [9]$$

$$\nu_M \sim \text{half-Cauchy}(0, 2.5). \quad [10]$$

$$L_k \sim \text{LKJ}_{\text{Cholesky}}(\nu = 2.0). \quad [11]$$

Because error variance may differ depending on the type of measurement (biomass density, individual density, stipe density, or percent cover) we allowed for different half-Cauchy hyperpriors (ν_M) on the study level error variance for each of the four measurement types.

We sampled posteriors within a Bayesian hierarchical framework via the no-U-turn-sampler variant of Hamilton Monte Carlo (72) in Stan via *rstan* (73, 74) using R (75). Sampling included three chains each of 3,000 iterations and a 1,500-iteration burn-in period (sufficient to produce posterior convergence).

From the numerically generated posterior samples, we calculated the mean and two-tailed quantiles, or 90% symmetrical credible intervals (i.e., Bayesian analog to a confidence interval) for each parameter. We highlight those rate estimates for which the 90% posterior credible interval did not overlap zero as having a high probability of decline or increase. That is, if the upper bound of the 90% credible interval lies on zero, this value equates to a 95% probability of decline. We express the magnitude of change as the mean estimated slope (instantaneous rate of change per year), considering kelps to be declining where instantaneous rates are less than -0.015 y^{-1} and increasing where rates are greater than 0.015 y^{-1} (representing rates of change equivalent to a halving or doubling in abundance over a 50-y period).

ACKNOWLEDGMENTS. We thank Robert Scheibling for comments on a previous draft of this manuscript and Paul Geoghegan and A. Le Gal for contributions to the dataset. This research was conducted as part of the Kelp and Climate Change Working Group supported by the National Center for Ecological Analysis and Synthesis, a center funded by National Science Foundation (Grant DEB-00-72909); the University of California, Santa Barbara; and the State of California. This work was also supported by Massachusetts Institute of Technology SeaGrant 2015-R/RCM-39 (to J.E.K.B.), a Natural Sciences and Engineering Research Council of Canada Discovery Grant (to A.K.S.), the Norwegian Institute for Water Research, and the Institute of Marine Research in Norway.

- Myers RA, Worm B (2003) Rapid worldwide depletion of predatory fish communities. *Nature* 423(6937):280–283.
- Pandolfi JM, et al. (2003) Global trajectories of the long-term decline of coral reef ecosystems. *Science* 301(5635):955–958.
- Woodwell GM, et al. (1983) Global deforestation: Contribution to atmospheric carbon dioxide. *Science* 222(4628):1081–1086.
- Boyd PV, Lennartz ST, Glover DM, Doney SC (2014) Biological ramifications of climate-change-mediated oceanic multi-stressors. *Nat Commun* 5:71–79.
- Condon RH, et al. (2013) Recurrent jellyfish blooms are a consequence of global oscillations. *Proc Natl Acad Sci USA* 110(3):1000–1005.
- Waycott M, et al. (2009) Accelerating loss of seagrasses across the globe threatens coastal ecosystems. *Proc Natl Acad Sci USA* 106(30):12377–12381.
- Ling SD, Johnson CR, Frusher SD, Ridgway KR (2009) Overfishing reduces resilience of kelp beds to climate-driven catastrophic phase shift. *Proc Natl Acad Sci USA* 106(52):22341–22345.
- Strain EMA, van Belzen J, van Dalen J, Bouma TJ, Airoldi L (2015) Management of local stressors can improve the resilience of marine canopy algae to global stressors. *PLoS One* 10(3):e0120837.
- Dayton PK (1972) Toward an understanding of community resilience and the potential effects of enrichment to the benthos at McMurdo Sound, Antarctica. *Proceedings of the Colloquium on Conservation Problems in Antarctica*, ed Parker BC (Allen Press, Lawrence, KS).
- Beck MW, et al. (2011) Shellfish reefs at risk globally and recommendations for ecosystem revitalization. *Bioscience* 61:107–116.
- Danielsen F, et al. (2005) The Asian tsunami: A protective role for coastal vegetation. *Science* 310(5748):643.
- Grabowski JH, et al. (2012) Economic valuation of ecosystem services provided by oyster reefs. *Bioscience* 62:900–909.
- McGlathery KJ, Sundback K, Anderson IC (2007) Eutrophication in shallow coastal bays and lagoons: The role of plants in the coastal filter. *Mar Ecol Prog Ser* 348:1–18.

14. Jackson EL, Rees SE, Wilding C, Attrill MJ (2015) Use of a seagrass residency index to apportion commercial fishery landing values and recreation fisheries expenditure to seagrass habitat service. *Conserv Biol* 29(3):899–909.
15. Moburg F, Folke C (1999) Ecological goods and services of coral reef ecosystems. *Ecol Econ* 29:215–233.
16. Spalding MD, et al. (2007) Marine ecoregions of the world: A bioregionalization of coastal and shelf areas. *Bioscience* 57:573–583.
17. Bell TW, Cavanaugh KC, Reed DC, Siegel DA (2015) Geographic variability in the controls of giant kelp biomass dynamics. *J Biogeogr* 42:2100–2021.
18. Wernberg T, et al. (2013) An extreme climatic event alters marine ecosystem structure in a global biodiversity hotspot. *Nat Clim Chang* 3:78–82.
19. Bennett S, et al. (2016) The 'Great Southern Reef': Social, ecological and economic value of Australia's neglected kelp forests. *Mar Freshw Res* 67:47–56.
20. Leith H, Whittaker RH (1975) *Primary Productivity of the Biosphere* (Springer, New York).
21. Mann KH (1973) Seaweeds: Their productivity and strategy for growth: The role of large marine algae in coastal productivity is far more important than has been suspected. *Science* 182(4116):975–981.
22. Dayton PK (1985) Ecology of kelp communities. *Annu Rev Ecol Syst* 16:215–245.
23. Duggins DO, Simenstad CA, Estes JA (1989) Magnification of secondary production by kelp detritus in coastal marine ecosystems. *Science* 245(4914):170–173.
24. Krumhansl KA, Scheibling RE (2012) Production and fate of kelp detritus. *Mar Ecol Prog Ser* 467:281–302.
25. Smale DA, Burrows MT, Moore P, O'Connor N, Hawkins SJ (2013) Threats and knowledge gaps for ecosystem services provided by kelp forests: A northeast Atlantic perspective. *Ecol Evol* 3(11):4016–4038.
26. Vásquez JA, et al. (2014) Economic valuation of kelp forests in northern Chile: Values of goods and services of the ecosystem. *J Appl Phycol* 26:1081–1088.
27. Dayton PK, Tegner MJ, Parnell PE, Edwards PB (1992) Temporal and spatial patterns of disturbance and recovery in a kelp forest community. *Ecol Monogr* 62:421–445.
28. Filbee-Dexter K, Scheibling RE (2014) Sea urchin barrens as alternative stable states of collapsed kelp ecosystems. *Mar Ecol Prog Ser* 495:1–25.
29. Wernberg T, et al. (2010) Decreasing resilience of kelp beds along a latitudinal temperature gradient: Potential implications for a warmer future. *Ecol Lett* 13(6):685–694.
30. Ling SD, et al. (2015) Global regime shift dynamics of catastrophic sea urchin overgrazing. *Philos Trans R Soc Lond B Biol Sci* 370:1–10.
31. Connell SD, et al. (2008) Recovering a lost baseline: Missing kelp forests from a metropolitan coast. *Mar Ecol Prog Ser* 360:63–72.
32. Filbee-Dexter K, Feehan C, Scheibling RE (2016) Large-scale degradation of a kelp ecosystem in an ocean warming hotspot. *Mar Ecol Prog Ser* 543:141–152.
33. Johnson CR, et al. (2011) Climate change cascades: Shifts in oceanography, species' ranges and subtidal marine community dynamics in eastern Tasmania. *J Exp Mar Biol Ecol* 400:17–32.
34. Moy FE, Christie H (2012) Large-scale shift from sugar kelp (*Saccharina latissima*) to ephemeral algae along the south and west coast of Norway. *Mar Biol Res* 8:309–321.
35. Steneck RS, et al. (2002) Kelp forest ecosystems: Biodiversity, stability, resilience and future. *Environ Conserv* 29:436–459.
36. Blamey LK, et al. (2015) Ecosystem change in the southern Benguela and the underlying processes. *J Mar Syst* 144:9–29.
37. Smale DA, Wernberg T, Yunnice ALE, Vance T (2014) The rise of *Laminaria ochroleuca* in the Western English Channel (UK) and comparisons with its competitor and assemblage dominant *Laminaria hyperborea*. *Mar Ecol (Berl)* 36:1033–1044.
38. Mumby PJ, Hastings A, Edwards HJ (2007) Thresholds and the resilience of Caribbean coral reefs. *Nature* 450(7166):98–101.
39. Cebrian J (2002) Variability and control of carbon consumption, export, and accumulation in marine communities. *Limnol Oceanogr* 47:11–22.
40. Norderhaug KM, et al. (2015) Combined effects from climate variation and eutrophication on the diversity in hard bottom communities on the Skagerrak coast 1990–2010. *Mar Ecol Prog Ser* 530:29–46.
41. Johnson CR, Mann KH (1988) Diversity, patterns of adaptation, and stability of Nova Scotian kelp beds. *Ecol Monogr* 58:129–154.
42. Cavanaugh KC, Siegel DA, Reed DC, Dennison PE (2011) Environmental controls of giant kelp biomass in the Santa Barbara Channel, California. *Mar Ecol Prog Ser* 429:1–17.
43. Gagné JA, Mann KH, Chapman ARO (1982) Seasonal patterns of growth and storage in *Laminaria longicruris* in relation to differing patterns of availability of nitrogen in the water. *Mar Biol* 69:91–101.
44. Reed DC, et al. (2011) Wave disturbance overwhelms top-down and bottom-up control of primary production in California kelp forests. *Ecology* 92(11):2108–2116.
45. Ghedini G, Russell BD, Connell SD (2015) Trophic compensation reinforces resistance: Herbivory absorbs the increasing effects of multiple disturbances. *Ecol Lett* 18(2):182–187.
46. Edwards MS (2004) Estimating scale-dependency in disturbance impacts: El Niños and giant kelp forests in the northeast Pacific. *Oecologia* 138(3):436–447.
47. Scheibling RE, Feehan CJ, Lauzon-Guay JS (2013) Climate change, disease and the dynamics of a kelp-bed ecosystem in Nova Scotia. *Climate Change: Perspectives from the Atlantic: Past, Present and Future*, eds Fernández-Palacios JM, et al. (Servicio de Publicaciones de la Universidad de La Laguna, Tenerife, Canary Islands), pp 41–81.
48. Meehan AJ, West RJ (2000) Recovery times for a damaged *Posidonia australis* bed in south eastern Australia. *Aquat Bot* 67:161–167.
49. Erftemeijer PLA, Lewis RRR, 3rd (2006) Environmental impacts of dredging on seagrasses: A review. *Mar Pollut Bull* 52(12):1553–1572.
50. Graham NAJ, Nash KL, Kool JT (2011) Coral reef recovery dynamics in a changing world. *Coral Reefs* 30:283–294.
51. Reed DC, Rassweiler AR, Miller RJ, Page HM, Holbrook SJ (2016) The value of a broad temporal and spatial perspective in understanding dynamics of kelp forest ecosystems. *Mar Freshw Res* 67:14–24.
52. Lima FP, Wetthey DS (2012) Three decades of high-resolution coastal sea surface temperatures reveal more than warming. *Nat Commun* 3:704.
53. Shears NT, Ross PM (2010) Toxic cascades: Multiple anthropogenic stressors have complex and unanticipated interactive effects on temperate reefs. *Ecol Lett* 13(9):1149–1159.
54. Strain EMA, Thomson RJ, Micheli F, Mancuso FP, Airoldi L (2014) Identifying the interacting roles of stressors in driving the global loss of canopy-forming to mat-forming algae in marine ecosystems. *Glob Change Biol* 20(11):3300–3312.
55. Bolton JJ, Anderson RJ, Smit AJ, Rothman MD (2012) South African kelp moving eastwards: The discovery of *Ecklonia maxima* (Osbeck) Papenfuss at De Hoop Nature Reserve on the south coast of South Africa. *Afr J Mar Sci* 34:147–151.
56. Russell BD, Thompson JA, Falkenberg LJ, Connell SD (2009) Synergistic effects of climate change and local stressors: CO₂ and nutrient-driven change in subtidal rocky habitats. *Glob Change Biol* 15:2153–2162.
57. Vásquez JA (2008) Production, use and fate of Chilean brown seaweeds: Resources for a sustainable fishery. *J Appl Phycol* 20:457–467.
58. Watson J, Estes JA (2011) Stability, resilience, and phase shifts in rocky subtidal communities along the west coast of Vancouver Island, Canada. *Ecol Monogr* 81:215–239.
59. Foster MS, Schiel DR (2010) Loss of predators and the collapse of southern California kelp forests (?): Alternatives, explanations and generalizations. *J Exp Mar Biol Ecol* 393:59–70.
60. Estes JA, Tinker MT, Williams TM, Doak DF (1998) Killer whale predation on sea otters linking oceanic and nearshore ecosystems. *Science* 282(5388):473–476.
61. Dayton PK, et al. (1984) Patch dynamics and stability of some California kelp communities. *Ecol Monogr* 54:253–289.
62. Ebeling AW, Laur DR, Rowley RJ (1985) Severe storm disturbances and reversal of community structure in a southern California kelp forest. *Mar Biol* 84:287–294.
63. Pearse JS, Hines AH (1979) Expansion of a central California kelp forest following the mass mortality of sea urchins. *Mar Biol* 51:83–91.
64. Wernberg T, et al. (2016) Climate-driven regime shift of a temperate marine ecosystem. *Science* 353(6295):169–172.
65. Voerman SE, Llera E, Rico JM (2013) Climate driven changes in subtidal kelp forest communities in NW Spain. *Mar Environ Res* 90:119–127.
66. Andersen GS, Steen H, Christie H, Fredriksen S, Moy FE (2011) Seasonal patterns of sporophyte growth, fertility, fouling, and mortality of *Saccharina latissima* in Skagerrak, Norway: Implications for forest recovery. *J Mar Biol* 2011:1–8.
67. Connell SD, Russell BD (2010) The direct effects of increasing CO₂ and temperature on non-calcifying organisms: Increasing the potential for phase shifts in kelp forests. *Proc Biol Sci* 277(1686):1409–1415.
68. Krumhansl KA, Scheibling RE (2011) Detrital production in Nova Scotian kelp beds: Patterns and processes. *Mar Ecol Prog Ser* 421:67–82.
69. Costanza R, et al. (1997) The value of the world's ecosystem services and natural capital. *Nature* 387:253–260.
70. Connor DW, Hiscock K (1996) Data collection methods (with Appendices 5–10). *Marine Nature Conservation Review: Rationale and Methods*, Coasts and Seas of the United Kingdom. MNCR series, ed Hiscock K (Joint Nature Conservation Committee, Peterborough, UK), pp 51–65, 126–158.
71. Gelman A, et al. (2013) *Bayesian Data Analysis* (Chapman & Hall, London), 3rd Ed.
72. Hoffman MD, Gelman A (2014) The no-U-turn sampler: Adaptively setting path lengths in Hamiltonian Monte Carlo. *J Mach Learn Res* 15:1593–1623.
73. Stan Development Team (2014) RStan: The R interface to Stan. Version 2.5.0. Available from mc-stan.org/interfaces/rstan.html. Accessed October 28, 2016.
74. Stan Development Team (2014b) Stan: A C++ library for probability and sampling. Version 2.5.0. Available at mc-stan.org. Accessed October 28, 2016.
75. R Core Team (2016) *R: A Language and Environment for Statistical Computing* (R Foundation for Statistical Computing, Vienna). Available at www.R-project.org. Accessed June 1, 2016.

Table S1: Data sources for each ecoregion, including literature references for mined data sources and the names of contributed data sets. Contributed data sets are described in more detail in Table S2. Also included are the species represented by each data set in each ecoregion.

Ecoregion	Data source	Species
Agulhas Bank	Contributed: South Africa Gansbaai	<i>Ecklonia maxima</i>
Aleutian Islands	Contributed: Estes NPRB	<i>Agarum clathrus</i> , <i>Pleurophycus gardneri</i> , <i>Nereocystis luetkeana</i> , <i>Laminaria yezoensis</i> , <i>Laminaria longipes</i> , <i>Eualaria fistulosa</i> , <i>Cymathaere triplicata</i> , <i>Agarum clathratum</i>
Bassian	Contributed: Kelp Cover Australia Victoria, Kelp Cover Temperate Australia	<i>Undaria pinnatifida</i> , <i>Macrocystis pyrifera</i> , <i>Lessonia corrugata</i> , <i>Ecklonia radiata</i>
Beaufort Sea	Contributed: Konar Beaufort Sea	<i>Laminaria solidungula</i> , <i>Saccharina latissima</i> , <i>Alaria esculenta</i>
Cape Howe	Contributed: Kelp Cover Australia Victoria, Kelp Cover Temperate Australia	<i>Ecklonia radiata</i>
Celtic Seas	Mined: 1, 2 Contributed: The Brittany Rebet Monitoring, Northern Ireland Summary	<i>Undaria pinnatifida</i> , <i>Saccharina latissima</i> , <i>Laminaria ochroleuca</i> , <i>Laminaria hyperborea</i> , <i>Laminaria digitata</i> , <i>Alaria esculenta</i>
Central Chile	Contributed: Northern Chile Fondecyt	<i>Macrocystis pyrifera</i> , <i>Lessonia trabeculata</i>
Chiloense	Contributed: Southern Chile	<i>Macrocystis pyrifera</i>
Gulf of Alaska	Mined: 3 Contributed: Konar Gulf of Alaska	<i>Saccharina latissima</i> , <i>Pleurophycus gardneri</i> , <i>Nereocystis luetkeana</i> , <i>Laminaria yezoensis</i> , <i>Laminaria longipes</i> , <i>Laminaria bongardiana</i> , <i>Eualaria fistulosa</i> , <i>Cymathaere triplicata</i> , <i>Costaria costata</i> , <i>Alaria marginata</i> , <i>Agarum clathratum</i>
Gulf of Maine	Mined: 4 Contributed: Steneck Gulf of Maine, Witman Gulf of Maine, Normandeau Associates	<i>Saccharina latissima</i> , <i>Laminaria digitata</i> , <i>Alaria esculenta</i> , <i>Agarum clathratum</i>
Gulf of St. Lawrence	Mined: 5, 6	<i>Saccharina latissima</i> , <i>Alaria esculenta</i> , <i>Agarum clathratum</i>
Houtman	Mined: 7,8,9 Contributed: Kelp Cover Temperate Australia, Australia Western Australia Wernberg	<i>Ecklonia radiata</i>
Humboldtian	Mined: 10 Contributed: Northern Chile Fondecyt	<i>Macrocystis pyrifera</i> , <i>Lessonia trabeculata</i>
Leeuwin	Contributed: Australia Western Australia Wernberg	<i>Ecklonia radiata</i>
Manning-Hawkesbury	Mined: 11,12,13	<i>Ecklonia radiata</i>
Namaqua	Mined: 14,15	<i>Laminaria pallida</i> , <i>Ecklonia maxima</i>
North American Pacific Fjordland	Mined: 16, 17 Contributed: Haida Gwaii	<i>Saccharina latissima</i> , <i>Saccharina groenlandica</i> , <i>Pterygophora californica</i> , <i>Pleurophycus gardneri</i> , <i>Nereocystis luetkeana</i> , <i>Macrocystis pyrifera</i> , <i>Laminaria yezoensis</i> , <i>Laminaria setchellii</i> , <i>Laminaria longipes</i> , <i>Saccharina groenlandica</i> , <i>Eualaria fistulosa</i> , <i>Egria menziesii</i> , <i>Cymathaere triplicata</i> , <i>Costaria costata</i> , <i>Alaria marginata</i> , <i>Agarum clathrus</i> , <i>Agarum clathratum</i>
North Sea	Contributed: Norway Inner Coast (monitoring), Norway Inner Coast (assessment), Norway Monitoring	<i>Saccharina latissima</i> , <i>Laminaria hyperborea</i> , <i>Laminaria digitata</i>
Northeastern New Zealand	Contributed: New Zealand Hakurai Gulf, Northern New Zealand	<i>Lessonia variegata</i> , <i>Ecklonia radiata</i>
Northern and Central California	Mined: 18,19, 20 Contributed: Edwards Baja, San Nicholas Island, Channel Islands National Park, PISCO Subtidal	<i>Undaria pinnatifida</i> , <i>Pterygophora californica</i> , <i>Pleurophycus gardneri</i> , <i>Nereocystis luetkeana</i> , <i>Macrocystis pyrifera</i> , <i>Laminaria setchellii</i> , <i>Saccharina latissima</i> , <i>Laminaria farlowii</i> , <i>Ecklonia arborea</i> , <i>Egria menziesii</i> , <i>Dictyoneurum californicum</i> , <i>Costaria costata</i> , <i>Alaria marginata</i> , <i>Agarum fimbriatum</i>
Oregon, Washington, Vancouver Is.	Mined: 21, 22, 23, 24, 25 Contributed: PISCO Oregon, Vancouver Island	<i>Undaria pinnatifida</i> , <i>Saccharina latissima</i> , <i>Pterygophora californica</i> , <i>Pleurophycus gardneri</i> , <i>Nereocystis luetkeana</i> , <i>Macrocystis</i>

		<i>pyrifera, Lessoniopsis littoralis, Laminaria setchellii, Laminaria farlowii, Ecklonia arborea, Egregia menziesii, Costaria costata, Alaria marginata, Agarum fimbriatum, Saccharina groenlandica</i>
Scotian Shelf	<i>Mined: 26, 27, 28, 29, 30, 31, 32, 33,34, 35, 36, 37, 38, 39, 40</i>	<i>Saccharina latissima, Laminaria digitata, Agarum clathratum</i>
South Australian Gulfs	<i>Contributed: Kelp Cover Temperate Australia, Australia Connell Canopy Loss</i>	<i>Ecklonia radiata</i>
South European Atlantic Shelf	<i>Contributed: The Brittany Rebet Monitoring</i>	<i>Undaria pinnatifida, Saccharina latissima, Laminaria ochroleuca, Laminaria hyperborea</i>
Southern California Bight	<i>Contributed: Edwards Baja, San Nicholas Island, Channel Islands National Park, PISCO Subtidal, Santa Barbara Coastal Long Term Ecological Research, Isla Natividad</i>	<i>Undaria pinnatifida, Pterygophora californica, Pleurophycus gardneri, Nereocystis luetkeana, Macrocystis pyrifera, Laminaria setchellii, Saccharina latissima, Laminaria farlowii, Ecklonia arborea, Egregia menziesii, Dictyoneurum californicum, Costaria costata, Alaria marginata, Agarum fimbriatum</i>
Southern Norway	<i>Contributed: Norway Inner Coast (monitoring), Norway Inner Coast (assessment), Norway Monitoring</i>	<i>Saccharina latissima, Laminaria hyperborea, Laminaria digitata</i>
Western Bassian	<i>Contributed: Kelp Cover Temperate Australia,</i>	<i>Ecklonia radiata, Macrocystis pyrifera</i>

Table S2. Contributed data set information, including the corresponding ecoregion, and the years covered, number of sites, contact person, and associated publications.

Data Set Name	Ecoregion	Years	# Sites	Contact	Associated Publications
Vancouver Island	Oregon, Washington Vancouver Coast and Shelf	1987-2011	8	Jane Watson	44
San Nicolas Island	Northern California and Southern California Bight	1980-2011	7	Mike Kenner	45
Witman Gulf of Maine	Gulf of Maine	1979-2014	4	Jon Witman	46, 47
Konar Beaufort Sea	Beaufort Sea	2003-2007	4	Brenda Konar	
Channel Islands National Park	Northern California and Southern California Bight	1986-2011	16	David Kushner	48
South Africa Gansbaai	Agulhas Bank	1992-1994	2	Rob Anderson	
Central Chile Fondecyt # 11110351 & 1151094	Central Chile	2013-2013	5	Alejandro Perez Matus	49
PISCO Subtidal	Central California and Southern California Bight	1999-2012	146	Jenn Caselle Mark Carr	
Santa Barbara Coastal Long Term Ecological Research	Southern California Bight	2001-2014	8	Dan Reed	51
Kelp Cover Temperate Australia	Bassian, Cape Howe, Houtman, South Australian Gulfs, Western Bassian	1992-2012	187	Graham Edgar Neville Barrett	52, 53, 54
Estes NPRB	Aleutian Islands	1987-2010	147	Mike Kenner, Jim Estes	
Isla Natividad, Baja California, Mexico	Southern California Bight	2006-2014	5	Fiorenza Micheli, Jorge Torre (Comunidad y Biodiversidad, Asociacion Civil)	55, 56
New Zealand Hauraki Gulf	Northeastern New Zealand	2007-2011	1	Nick Shears	57
Northern New Zealand	Northeastern New Zealand	1999-2011	12	Nick Shears	58, 59
The Brittany Rebent Monitoring The European Water Framework Directive Monitoring	Celtic Seas, South European Atlantic Shelf	2004-2013	25	Sandrine Derrien- Courtel	60, 61, 62
Australia Western Australia Wernberg	Houtman and Leeuwin	2006-2011	6	Thomas Wernberg	63
PISCO Oregon	Oregon, Washington Vancouver Coast and Shelf	2001-2004	8	Mark Carr	
Norway Monitoring	North Sea and Southern Norway	1990-2013	31	Kjell Magnus Norderhaug	64, 65
Northern Chile Fondecyt # 1040425	Central Chile and Humboldtian	2004-2007	4	Alejandro Perez Matus	66
Northern Ireland Summary	Celtic Seas	1982-2012	226	Julia Nunn and Claire Goodwin	
Haida Gwaii	North American Pacific Fjordland	2010-2013	8	Anne Salomon	
Southern Chile	Chiloense	2012	1	Alejandro Buschmann	67

Edwards Baja	Northern California and Southern California Bight	1997-2006	62	Matt Edwards	
Kelp Cover Australia Victoria	Bassian and Cape Howe	1998-2011	45	Scott Ling	68
Australia Connell Canopy Loss	South Australian Gulfs	1968-2008	2	Sean Connell	69
Steneck Gulf of Maine	Gulf of Maine	1996-2003	16	Bob Steneck	
Konar Gulf of Alaska	Gulf of Alaska	2003-2012	4	Brenda Konar	
Norway Inner Coast (monitoring)	North Sea/Southern Norway	1976-2012	1	Kjell Magnus Norderhaug	70
Norway Inner Coast (assessment)	North Sea and Southern Norway	1975-2006	9	Frithjof E Moy	71, 72
Normandeau Associates	Gulf of Maine	1978-2011	4	Paul Geoghegan	Error! Reference source not found.

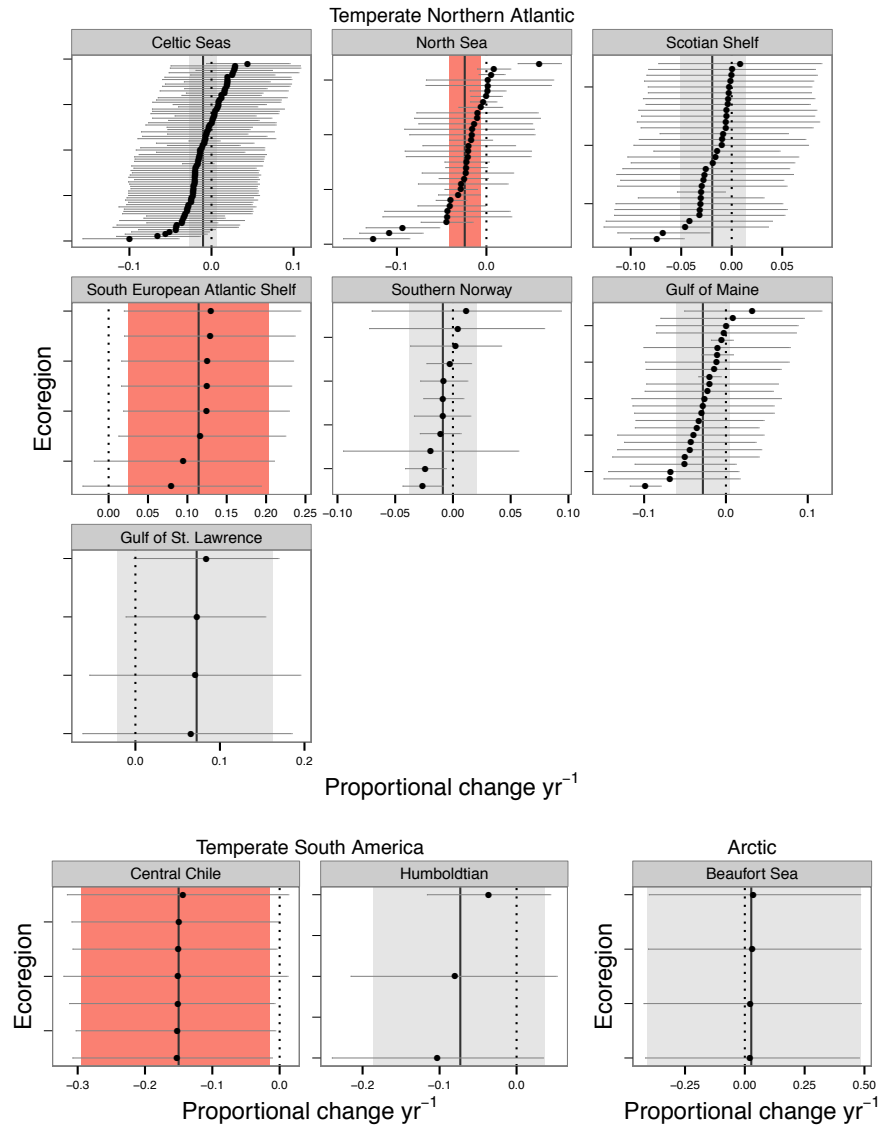


Figure S1. Black circles show site level estimates of mean slope with bars denoting 90% credible intervals (data from 1-72). Sites are grouped by ecoregion and realm, with solid black vertical lines showing ecoregion level mean slopes and shaded bars indicating 90% credible intervals. Dashed lines denote 0. Bars are colored red where there is a high probability (>95%) that the slope does not overlap with zero.

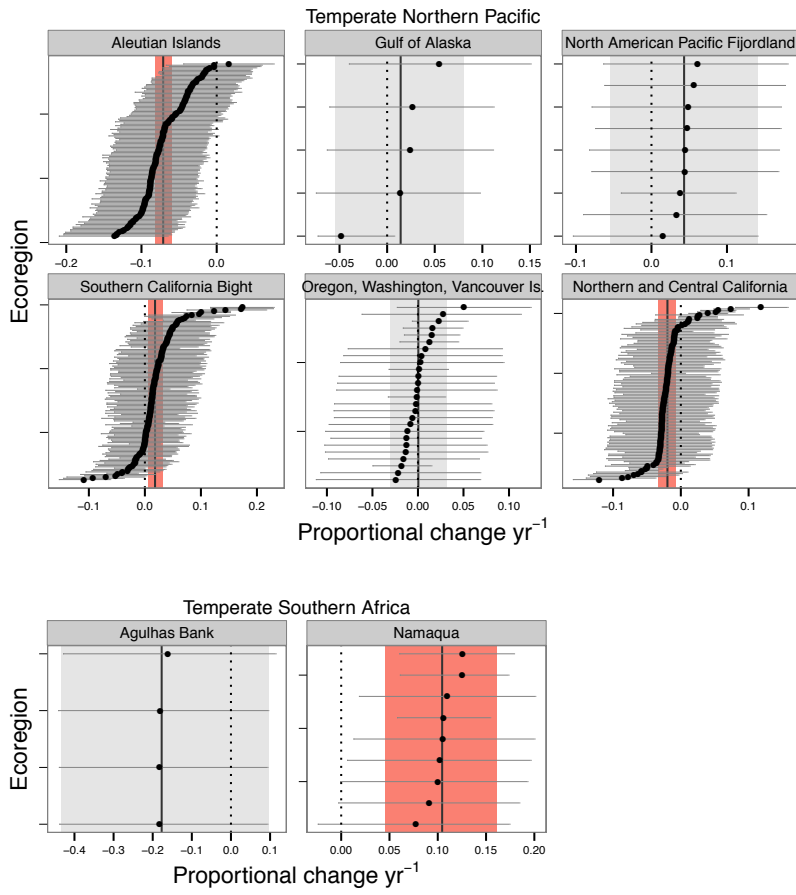


Figure S1 continued

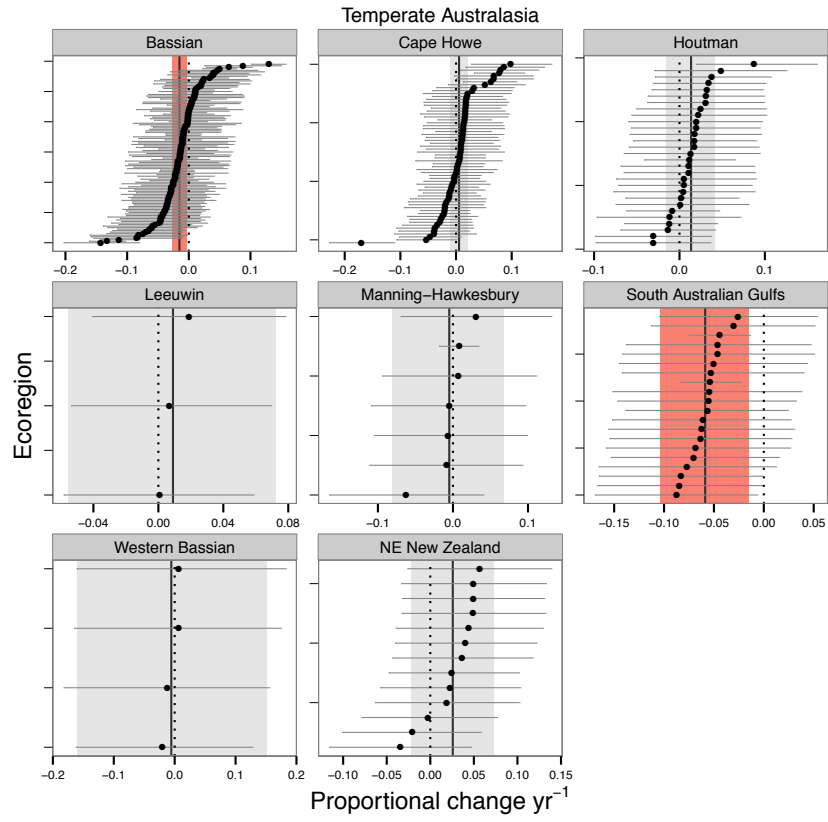


Figure S1 continued

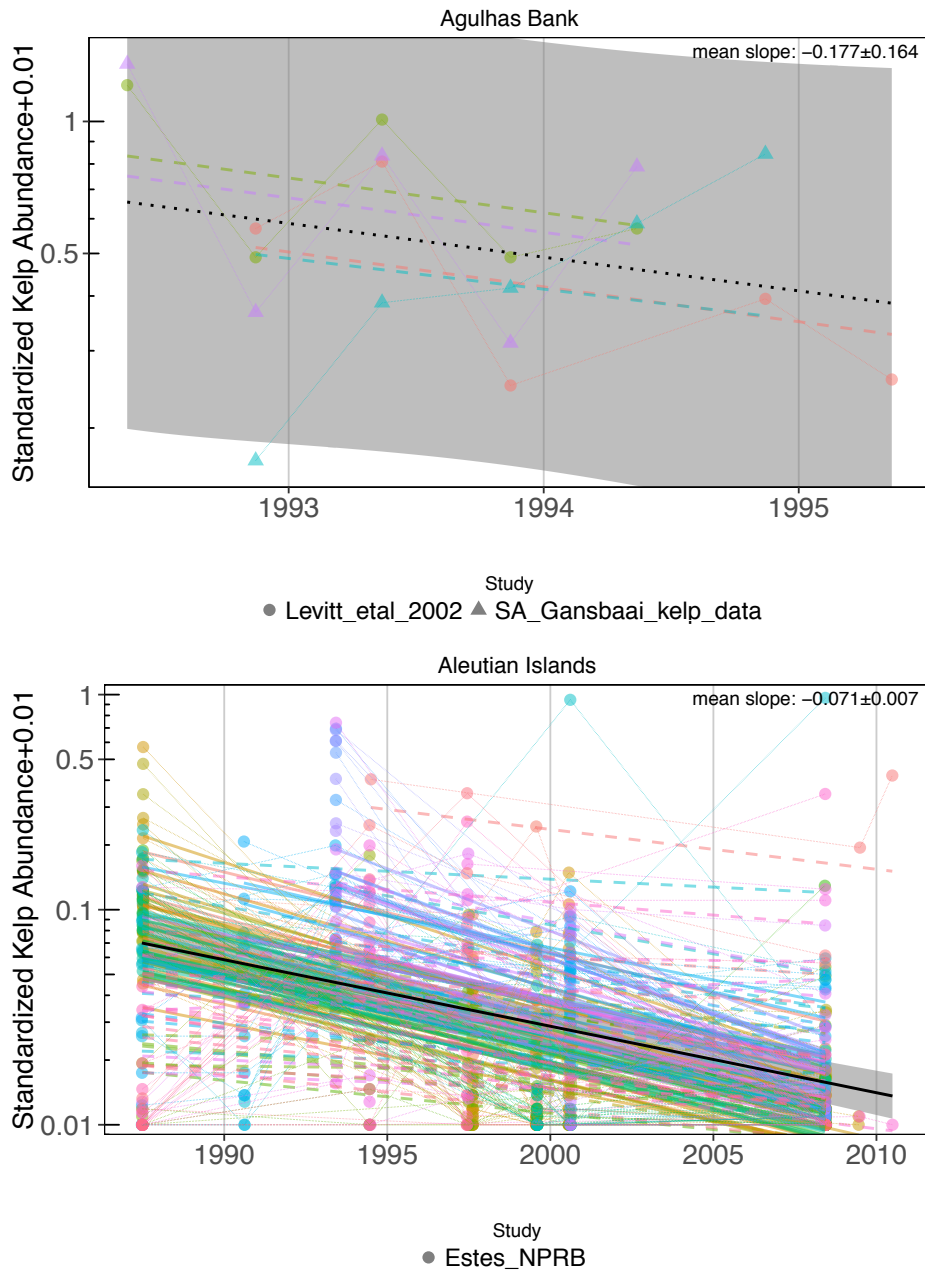


Figure S2. Raw data by ecoregion with site and ecoregion level modeled slopes (data from 1-72). Data and slope estimates are colored and symbolized by study (i.e., literature reference or contributed data set), while black lines show the ecoregion mean slope. Solid lines are used where site and ecoregion level slopes have a high probability (>95%) of being different from zero, and dashed lines are used where slopes do not meet this criterion. Shaded bands show the 90% credible interval around the mean rate of change (the black line).

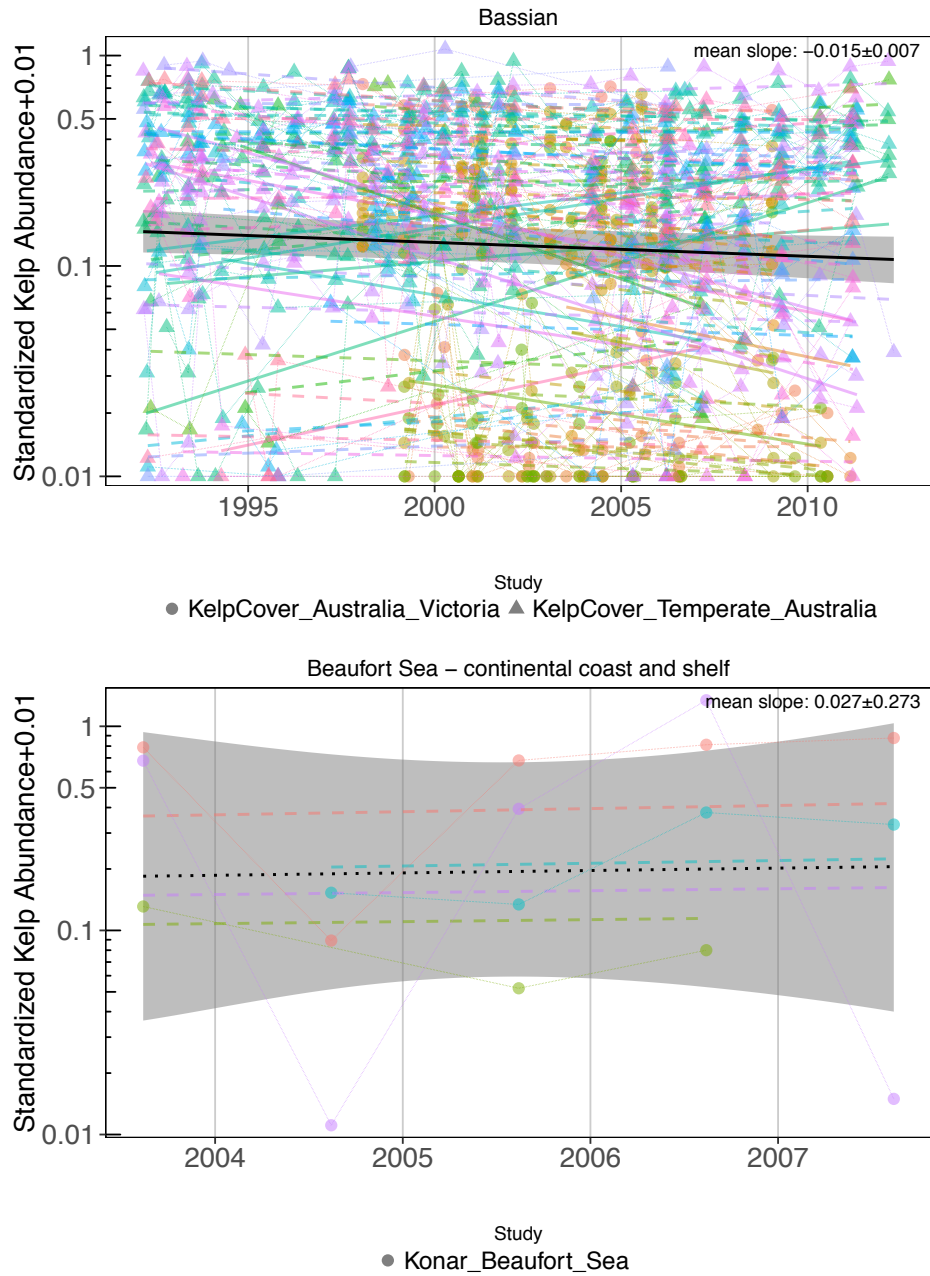


Figure S2 continued

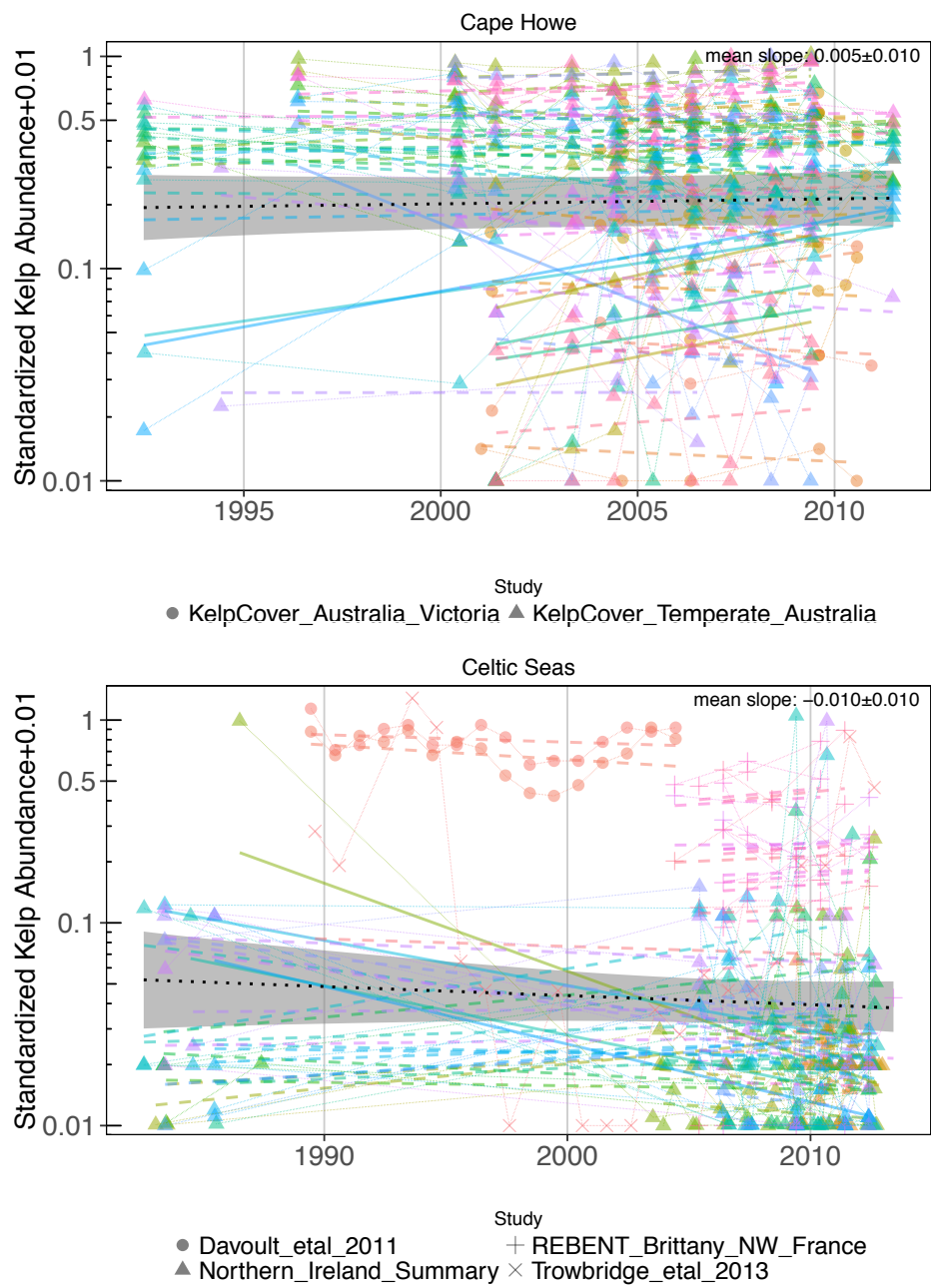
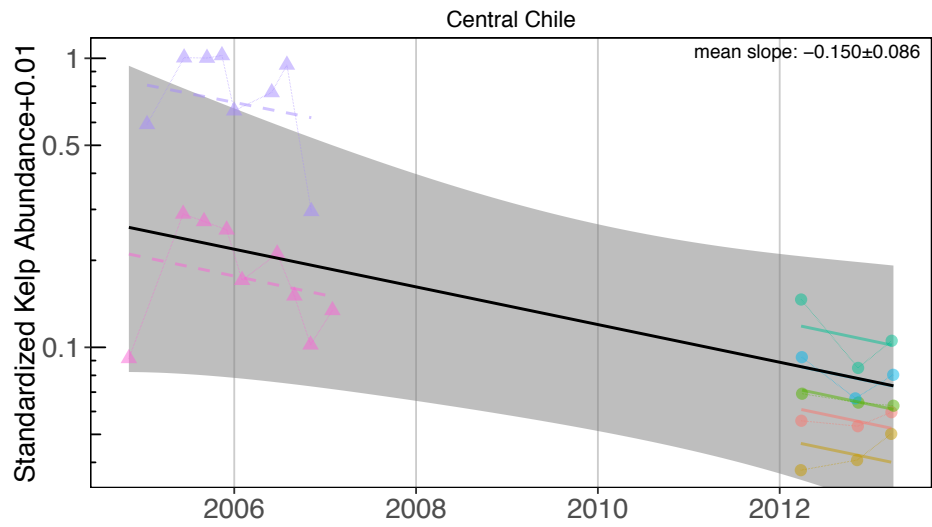
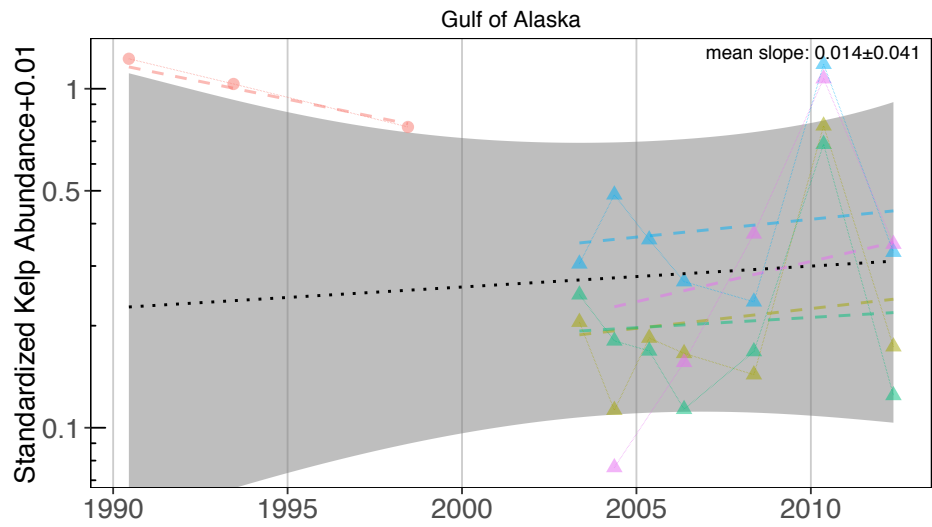


Figure S2 continued



Study
 ● Central Chile Fondecyt ▲ Northern Chile



Study
 ● Dean_etal_2000 ▲ konar_GulfOfAlaska

Figure S2 continued

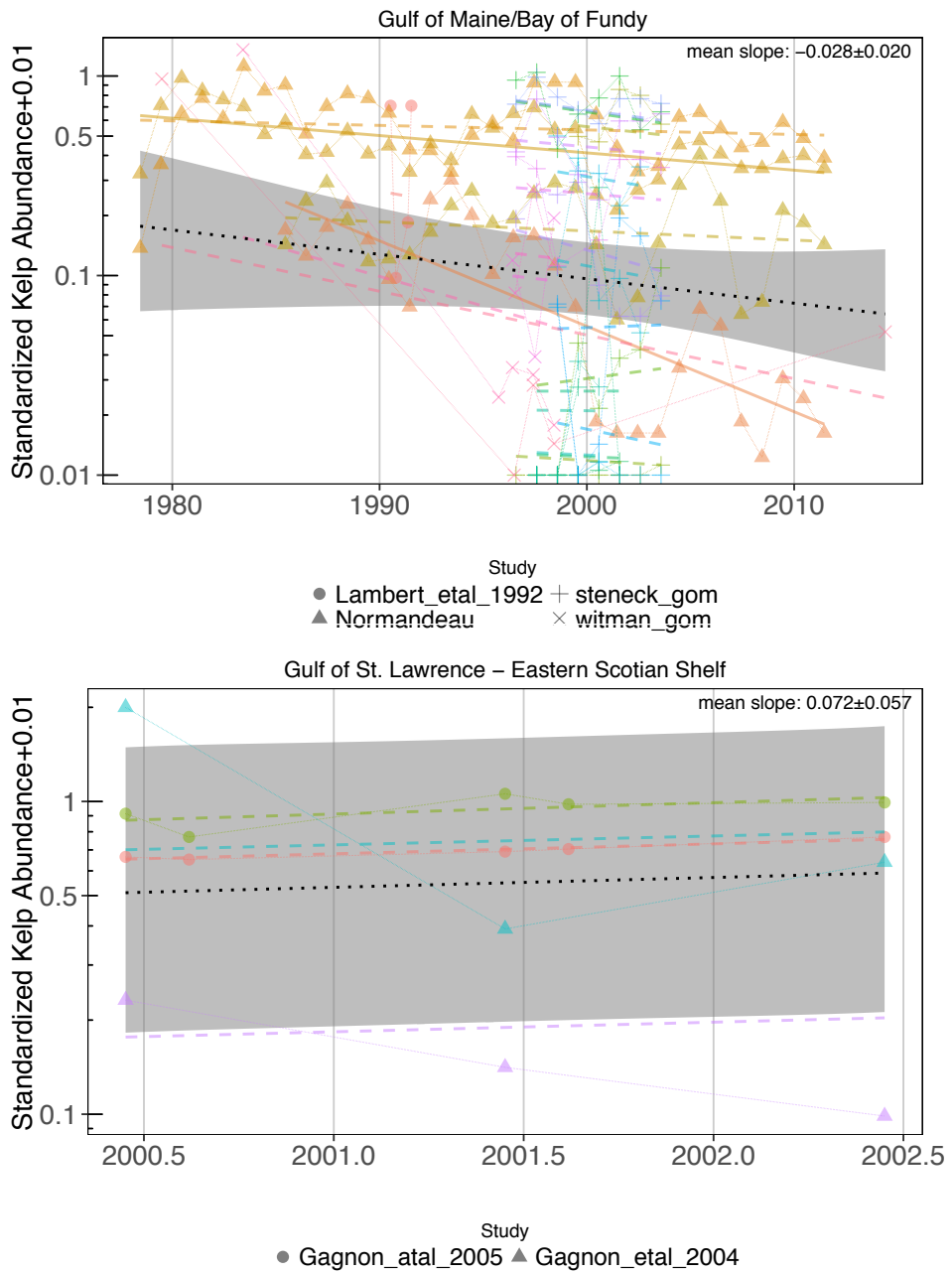


Figure S2 continued

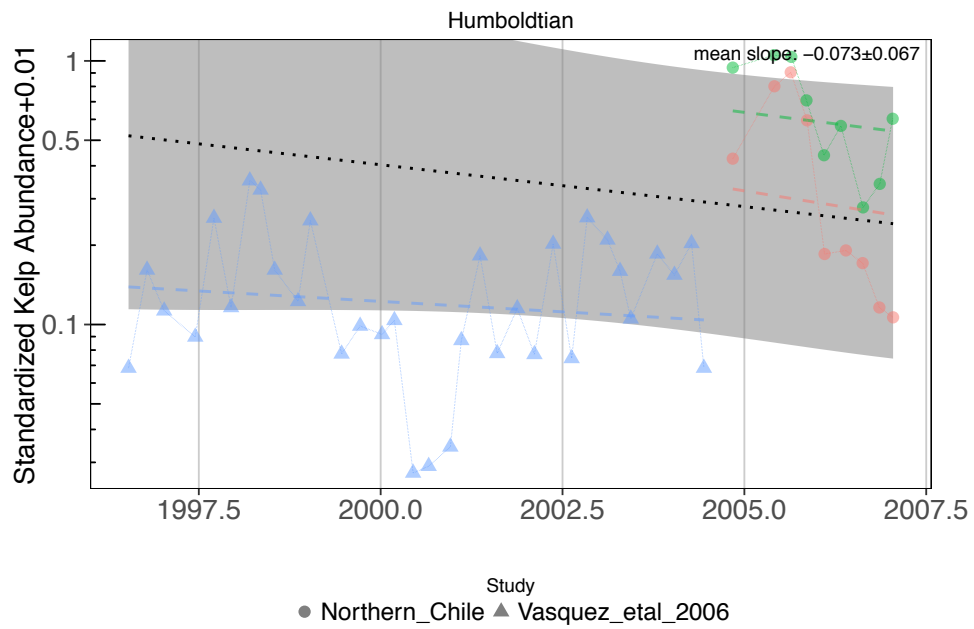
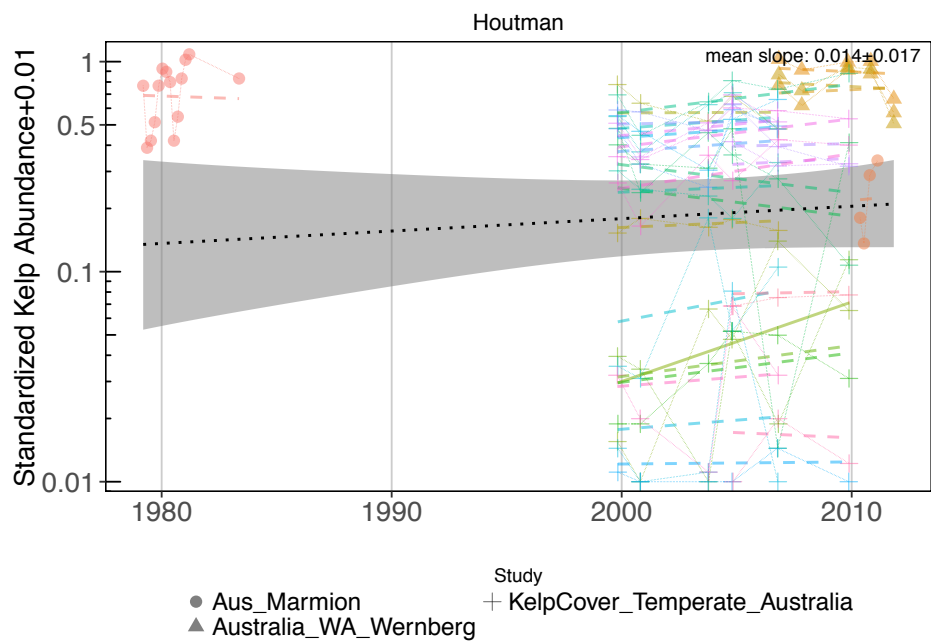


Figure S2 continued

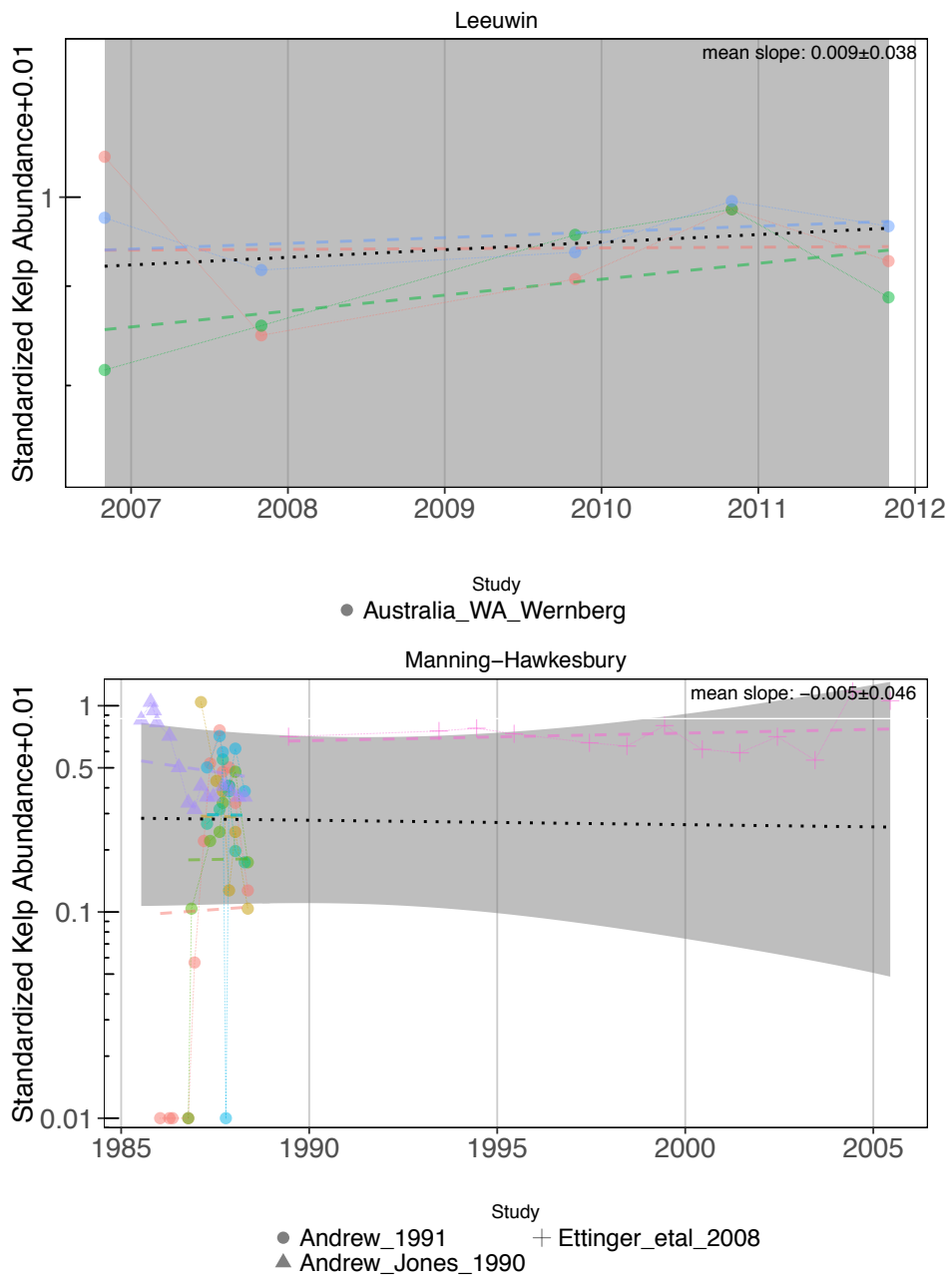


Figure S2 continued

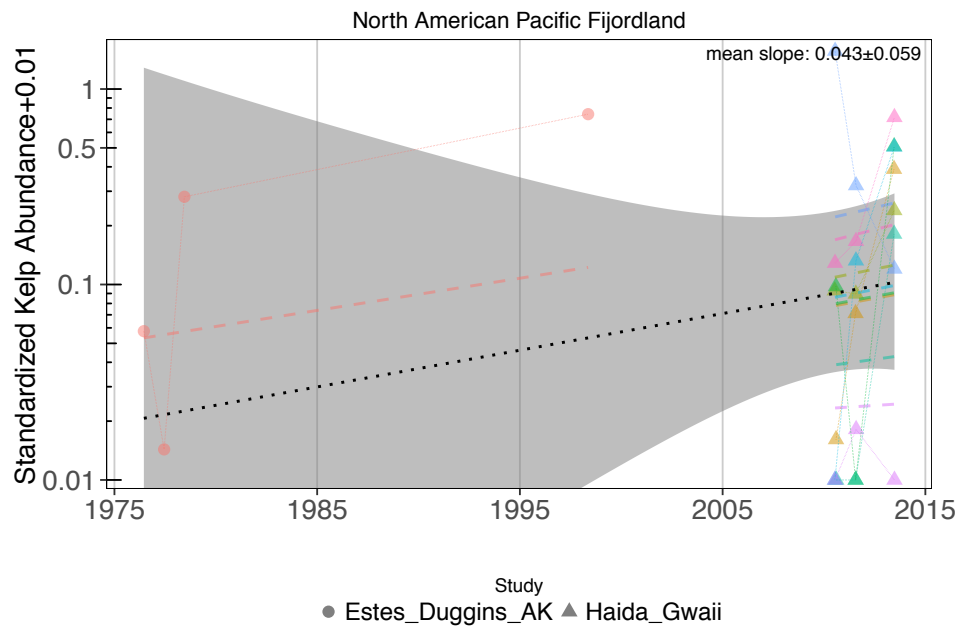
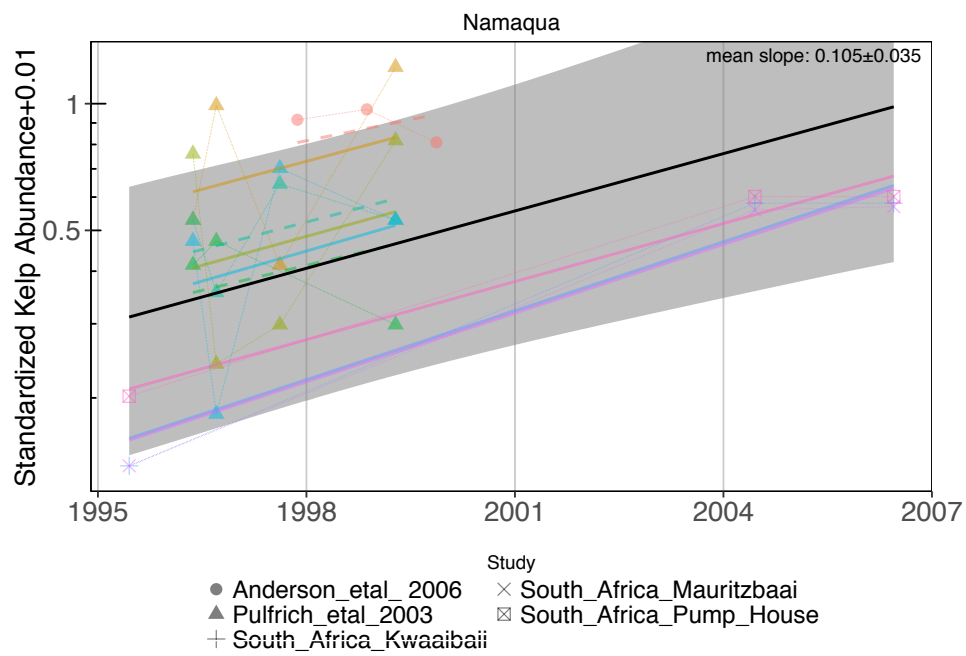


Figure S2 continued

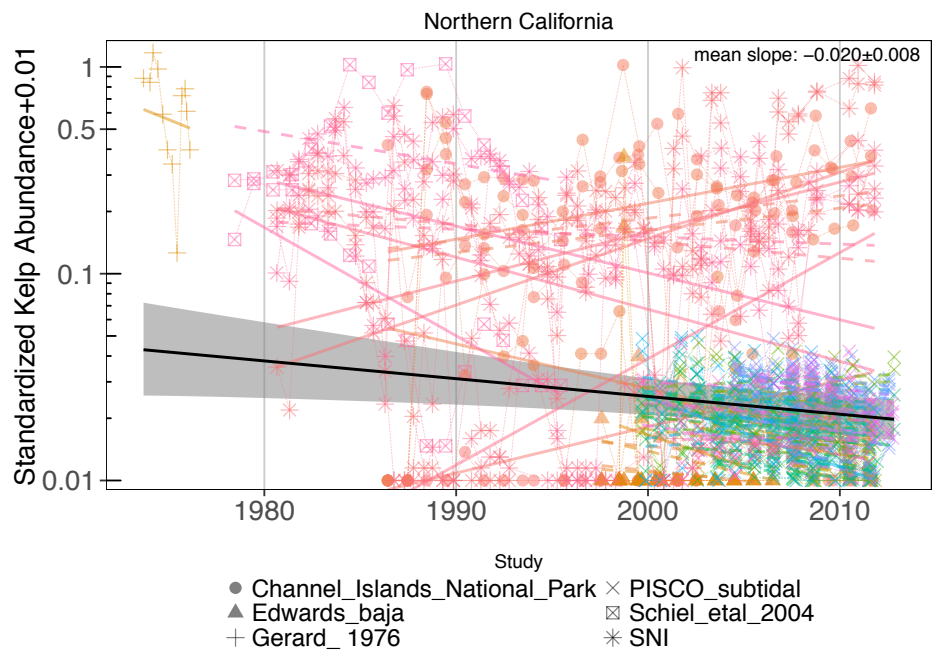
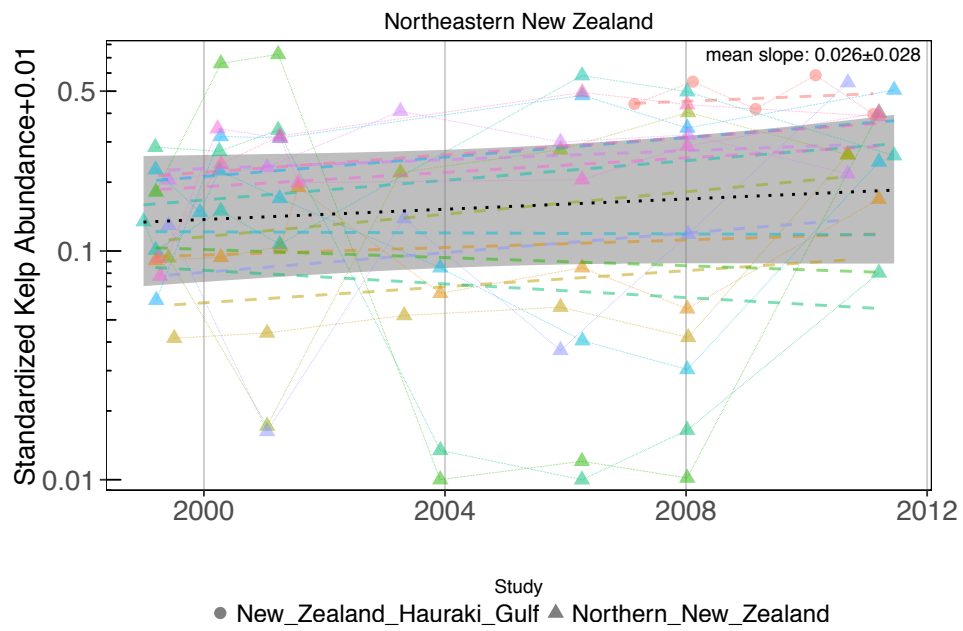


Figure S2 continued

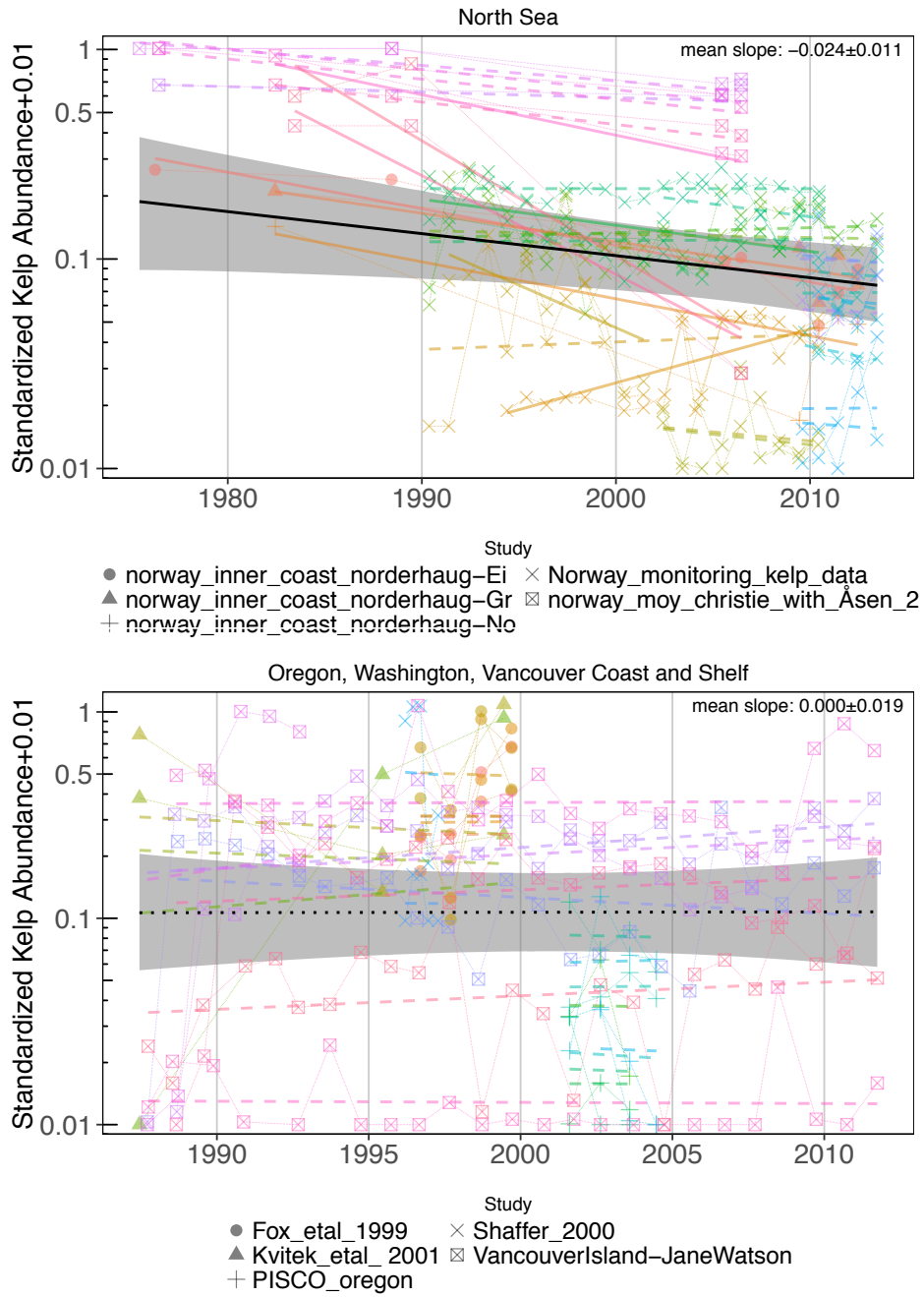
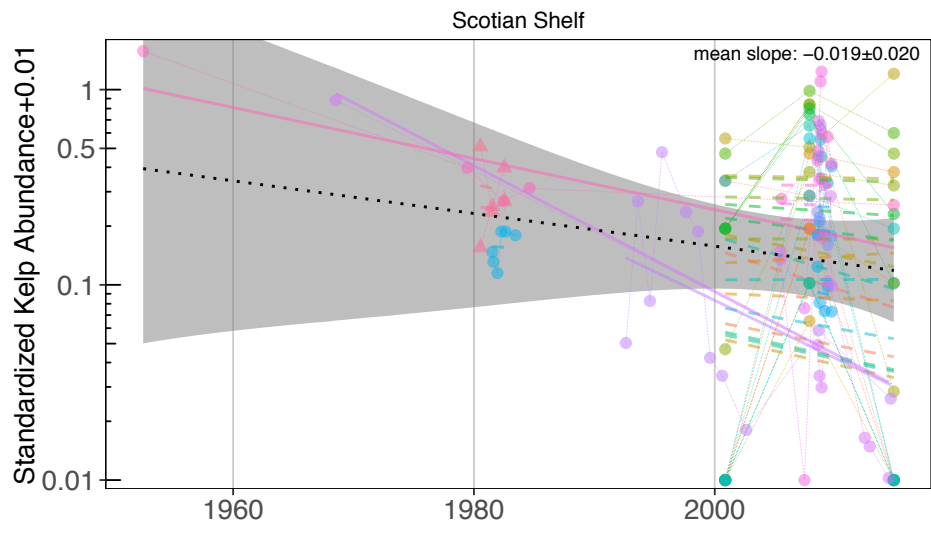
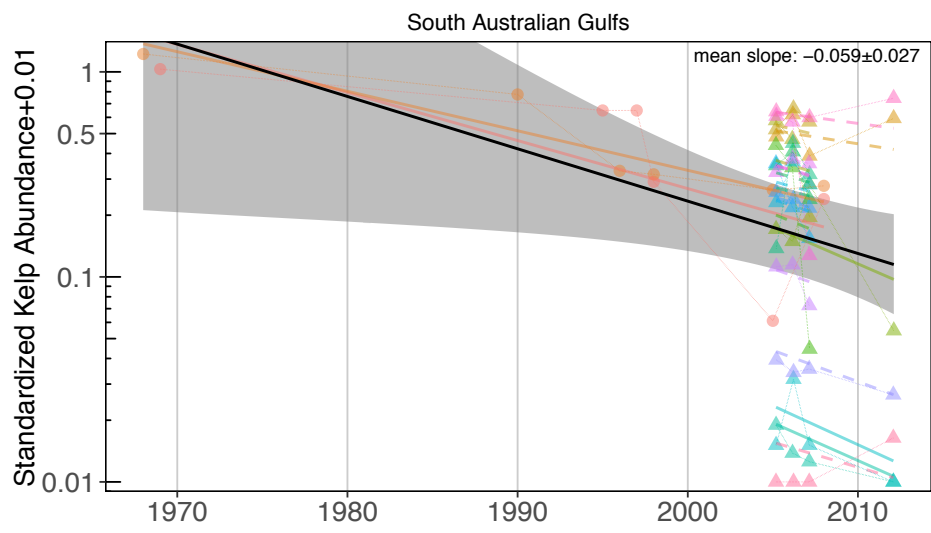


Figure S2 continued



Study
 ● Nova_Scotia ▲ Smith_1985



Study
 ● autralia_connell_canopyLoss ▲ KelpCover_Temperate_Australia

Figure S2 continued

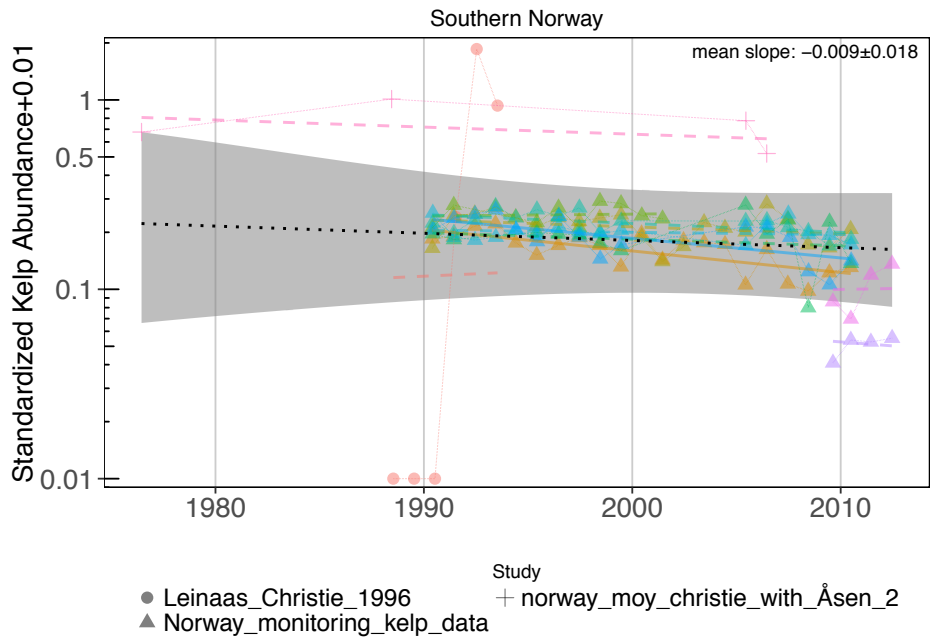
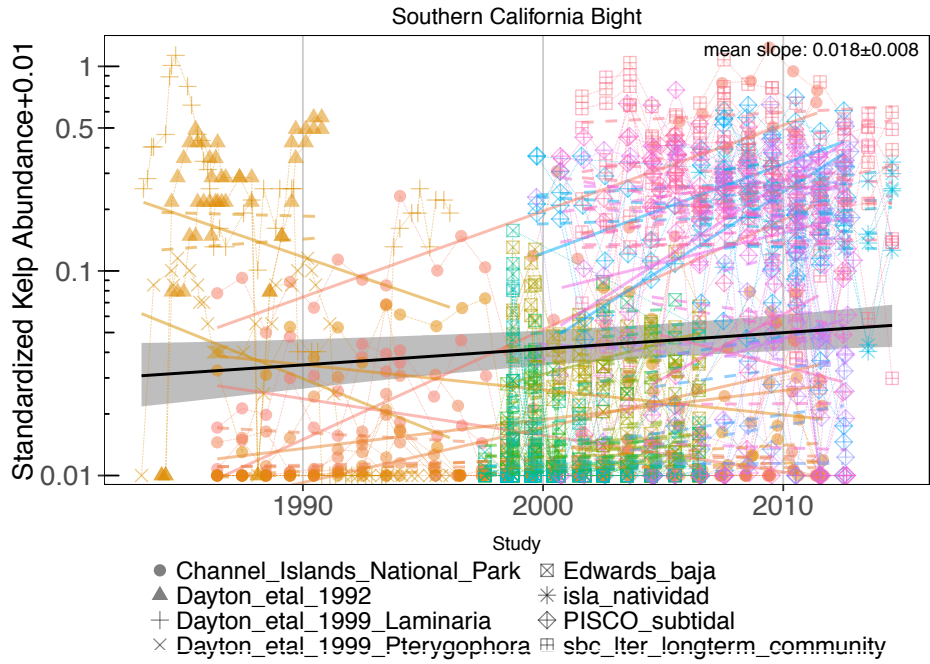
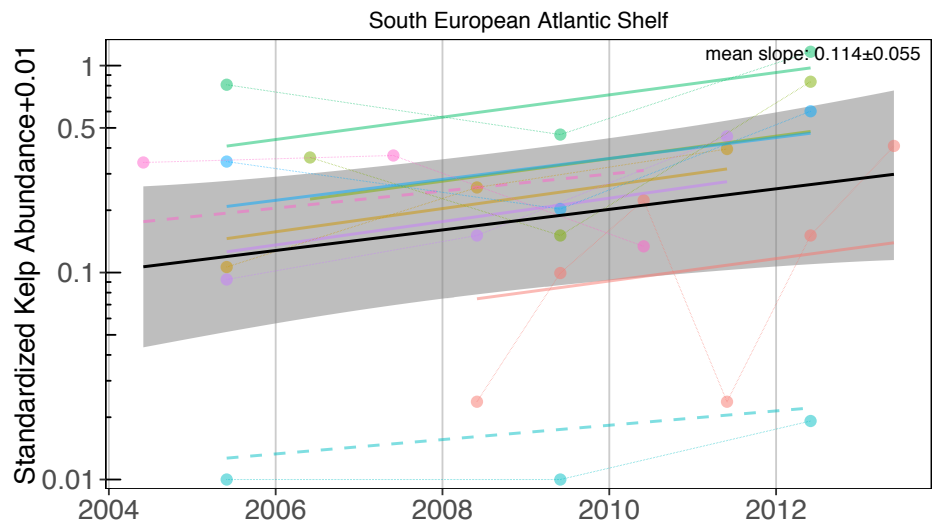
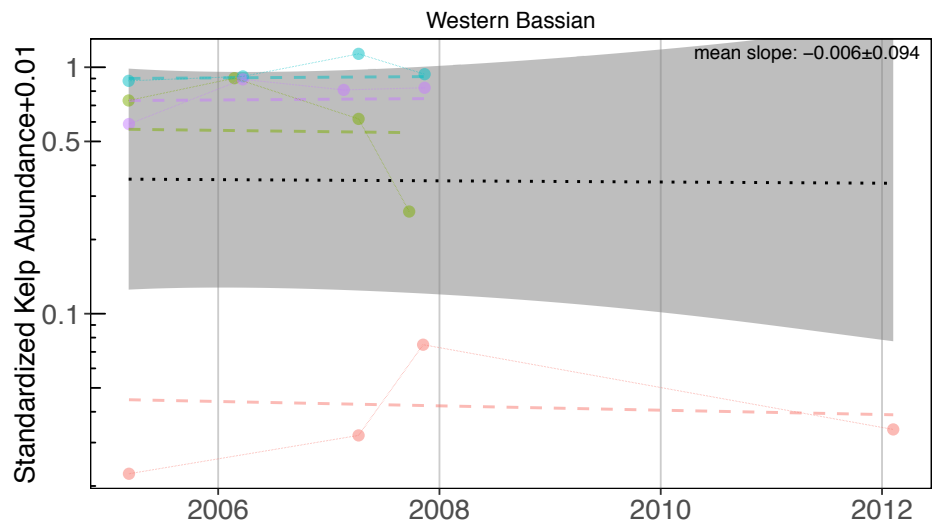


Figure S2 continued



Study
● REBENT_Brittany_NW_France



Study
● KelpCover_Temperate_Australia

Figure S2 continued

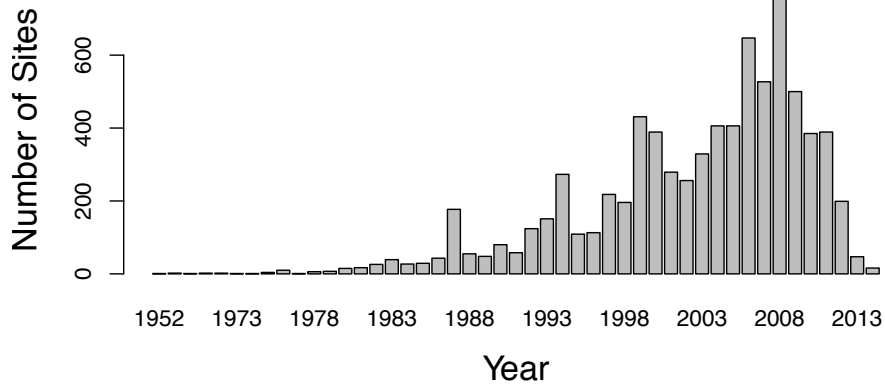


Figure S3. The number of sites in the global data set by year (data from 1-72).

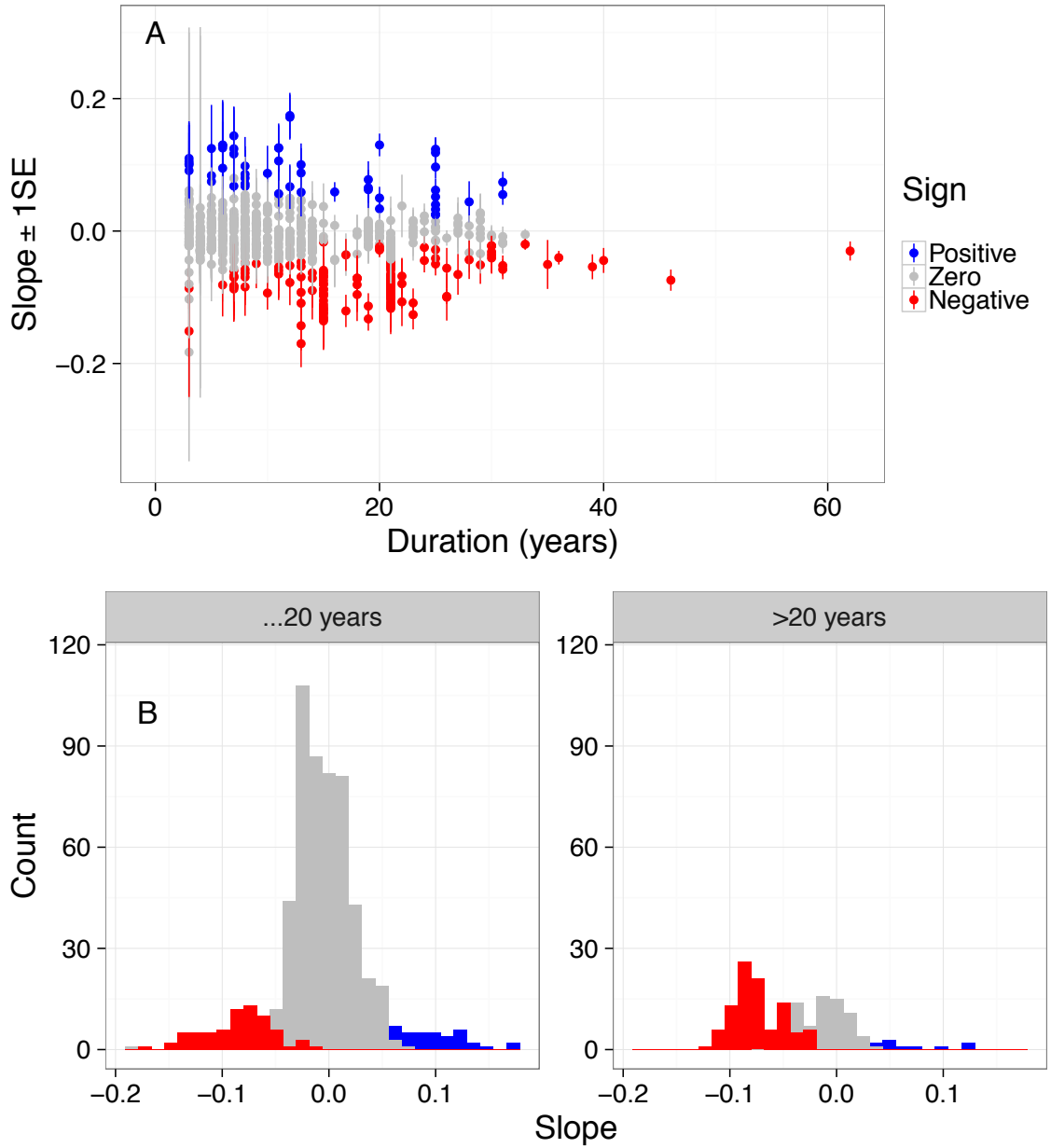


Figure S4. A) Site level slopes and associated standard error, plotted against study duration and colored according to sign (positive, negative, or no change) (data from 1-72). B) Distribution of site level slope estimates colored by sign (positive, negative, or no change).

References

1. Davoult D, Engel CR, Arzel P, Knoch D, Laurans M. 2011. Environmental factors and commercial harvesting: exploring possible links between the decline of the kelp *Laminaria digitata* in Brittany, France. *Cah Mar Biol* 52:429-435
2. Trowbridge CD, Little C, Dlouhy-Massengale B, Stirling P, Pilling GM. 2013. Changes in brown seaweed distributions in Lough Hyne, SW Ireland: a long-term perspective. *Botanica Marina* 56:323-338
3. Dean TA, Bodkin JL, Jewett SC, Monson DH, Jung D. 2000. Changes in sea urchins and kelp following a reduction in sea otter density as a result of the Exxon Valdez oil spill. *Mar Ecol Prog Ser.* 199:281-291
4. Lambert WJ, Levin PS, Berman J. 1992. Changes in the structure of a New England (USA) kelp bed: the effects of an introduced species? *Mar Ecol Prog Ser* 88: 303-307
5. Gagnon P, Himmelman JH, Johnson LE. 2004. Temporal variation in community interfaces: kelp-bed boundary dynamics adjacent to persistent urchin barrens. *Mar Biol* 144:1191-1203
6. Gagnon P, Johnson LE, Himmelman JH. 2005. Kelp patch dynamics in the face of intense herbivory: stability of *Agarum clathratum* (Phaeophyta) stands and associated flora on urchin barrens. *J Phycol* 41:498-505
7. de Bettignies T, Wernberg T, Lavery P, Vanderklift MA, Mohring MB. 2013. Contrasting mechanisms of dislodgement and erosion contribute to production of kelp detritus. *Limnol Oceanogr* 58:1680-1688
8. Kirkman H. 1984. Standing stock and production of *Ecklonia radiata*. *J Exp Mar Biol Ecol.* 76:119-130
9. Kirkman H. 1989. Growth, density, and biomass of *Ecklonia radiata* at different depths and growth under artificial shading off Perth, Western Australia. *Aust. J. Mar. Freshwater Res.* 40:169-177
10. Vásquez JA, Vega JMA, Buschmann AH. 2006. Long term variability in the structure of kelp communities in Northern Chile and then 1997-1998 ENSO. *J App Phycol* 18:505-519
11. Andrew NL. 1991. Changes in subtidal habitat following mass mortality of sea urchins in Botany Bay, New South Wales. *Australian Journal of Ecology* 16:353-362

12. Andrew NL, Jones GP. 1990. Patch formation by herbivorous fish in a temperature Australian kelp forest. *Oecologia* 85:57-68
13. Ettinger-Epstein P., Kingsford MJ. 2008. Effects of the El Nino southern oscillation on *Turbo torquatus* (Gastropoda) and their kelp habitat. *Austral Ecology* 33:594-606
14. Anderson RJ, Rothman MD, Share A, Drummond. 2006. Harvesting of the kelp *Ecklonia maxima* in South Africa affects its three obligate, red algal epiphytes. *J App Phycol* 18: 343-349
15. Pulfrich A, Parkins CA, Branch GM. 2003. The effects of shore-based diamond-diving on intertidal and subtidal biological communities and rock lobsters in southern Namibia. *Aquatic Conserv Mar Freshw Ecosyst* 13: 233-255
16. Duggins DO. 1980. Kelp beds and sea otters: An experimental approach. *Ecology* 61: 447-453
17. Estes JA, Duggins DO. 1995. Sea otters and kelp forests in Alaska: generality and variation in a community ecological paradigm. *Ecol Monogr* 65: 75-100
18. Gerard VA. 1976. Some aspects of material dynamics and energy flow in a kelp forest in Monterey Bay, California. University of California.
19. Schiel DR, Steinbeck JR, Foster MS. 2004. Ten years of induced ocean warming causes comprehensive changes in marine benthic communities. *Ecology* 85: 1833-1839
20. Harrold C, Reed D. 1985. Food availability, sea urchin grazing, and kelp forest community structure. *Ecology* 66:1160-1169
21. Fox D, Amend M, Merems A, Miller B, Golden J. 1998. Nearshore rocky reef assessment. Oregon Department of Fish and Wildlife Marine Program.
22. Fox D, Amend M, Merems A, Appy M. 2000. Nearshore rocky reef assessment. Oregon Department of Fish and Wildlife Marine Program.
23. Fox D, Merems A, Amend M, Weeks H, Romsos C, Appy M. 2004. Nearshore rocky reef assessment. Oregon Department of Fish and Wildlife Marine Program.
24. Kvitek RG, Iampietro PJ, Thomas K. 2001. Quantitative assessment of sea otter benthic prey communities within the Olympic Coast National Marine Sanctuary: 1999 re-survey of 1995 and 1985 monitoring stations. Puget Sound Research

25. Shaffer JA. 2000. Seasonal variation in understory kelp bed habitats of the Strait of Juan de Fuca. *J Coast Res* 16: 768-775
26. Feehan C, Scheibling RE, Lauzon-Guay JS. 2012. Aggregative feeding behavior in sea urchins leads to destructive grazing in a Nova Scotian kelp bed. *Mar Ecol Prog Ser* 444: 69-83
27. Gerard VA, Mann KH. 1979. Growth and production of *Laminaria longicruris* (Phaeophyta) populations exposed to different intensities of water movement. *J Phycol* 15: 33-41
28. Kelly JR, Scheibling RE, Balch T. 2011. Invasion-mediated shifts in the macrobenthic assemblage of a rocky subtidal ecosystem. *Mar Ecol Prog Ser* 437:69-78
29. Krumhansl KA, Scheibling RE. 2012. Detrital production in Nova Scotian kelp beds: patterns and processes. *Mar Ecol Prog Ser* 421:67-82
30. Lauzon-Guay JS, Scheibling RE. 2007. Behaviour of sea urchin *Strongylocentrotus droebachiensis* grazing fronts: food-mediated aggregation and density-dependent facilitation. *Mar Ecol Prog Ser* 329: 181-204
31. Mann KH. 1972. Ecological energetics of the seaweed zone in a marine bay on the Atlantic Coast of Canada. I. Zonation and biomass of seaweeds. *Mar Biol* 12:1-10
32. MacFarlane C. 1952. A survey of certain seaweeds of commercial importance in southwest Nova Scotia. *Can J Bot* 30: 78-97
33. Miller RJ. 1985. Succession in sea urchin and seaweed abundance in Nova Scotia, Canada. *Mar Biol* 84:275-286
34. O'Brien JM, Scheibling RE, Krumhansl KA. 2015. Positive feedback between large-scale disturbance and density-dependent grazing decreases resilience of a kelp bed ecosystem. *Mar Ecol Prog Ser* 522:1-13
35. Saunders MI, Metaxas A. 2009. Population dynamics of a nonindigenous epiphytic bryozoan *Membranipora membranacea* in the western North Atlantic: effects of kelp substrate. *Aquat Biol* 8:83-94
36. Scheibling R. 1986. Increased macroalgal abundance following mass mortalities of sea urchins (*Strongylocentrotus droebachiensis*) along the Atlantic coast of Nova Scotia. *Oecologia* 68:186-198.
37. Scheibling RE, Gagnon P. 2009. Temperature-mediated outbreak dynamics of the invasive bryozoan *Membranipora membranacea*. *Mar Ecol Prog Ser* 390:1-13

38. Smith BD. 1985. Recovery following experimental harvesting of *Laminaria longicruris* and *L. digitata* in southwestern Nova Scotia. *Helgo Meer* 39:83-101
39. Smith BD. 1988. Comparison of productivity estimates for *Laminaria* in Nova Scotia. *Can J Fish Aquat Sci* 45:557- 562
40. Yorke AF, Metaxas A. 2012. Relative importance of kelps and fucoids as substrata of the invasive epiphytic bryozoan *Membranipora membranacea* in Nova Scotia, Canada. *Aquat Biol* 16:17-30
41. Dayton PK, Tegner MJ, Parnell PE, Edwards PB. 1992. Temporal and spatial patterns of disturbance and recovery in a kelp forest community. *Ecol Monogr* 62:421-445
42. Dayton PK, Tegner MJ, Edwards PB, Riser KL. 1999. Temporal and spatial scales of kelp demography: the role of oceanographic climate. *Ecol Monogr* 69:219-250
43. Leinaas HP, Christie H. 1996. Effects of removing sea urchins (*Strongylocentrotus droebachiensis*): stability of the barren state and succession of kelp forest recover in the East Atlantic. *Oecologia* 105:524-536
44. Watson J, Estes JA (2011). Stability, resilience, and phase shifts in rocky subtidal communities along the west coast of Vancouver Island, Canada. *Ecol. Monogr.* 81:215-239.
45. Kenner MC et al. (2013) A multi-decade time series of kelp forest community structure at San Nicolas Island, California (USA). *Ecology* 94:2654–2654.
46. Witman JD, Genovese SJ, Bruno JF, McLaughlin JW, Pavlin BI (2003) Massive prey recruitment and the control of rocky subtidal communities on large spatial scales. *Ecol Monogr* 73:441-462.
47. Witman JD (1987) Subtidal coexistence: storms, grazing, mutualism, and the zonation of kelps and mussels. *Ecol Monogr* 57:167-187.
48. Kushner DJ, Rassweiler A, Mclaughlin JP, Lafferty KD (2013) A multi-decade time series of kelp forest community structure at the California Channel Islands. *Ecology* 94:2655
49. Pérez-Matus A, Carrasco S, Gelcich S, Fernandez M, Wieters E. Upwelling and anthropogenic factors influence functional community structure of subtidal kelp forests of Central Chile. *Ecosphere* (In Review)

50. Levitt GJ, Anderson RJ, Boothroyd CJT, and Kemp FA (2002) The effects of kelp harvesting on its regrowth and the understory benthic community at danger point, South Africa, and a new method of harvesting kelp fronds. *S Afr J Mar Sci* 24: 71-95
51. Reed DC (2014) SBC LTER: Reef: Kelp Forest Community Dynamics: Abundance and size of giant kelp (*Macrocystis pyrifera*), ongoing since 2000. Santa Barbara Coastal LTER. doi:10.6073/pasta/d90872297e30026b263a119d4f5bca9f
52. Edgar GJ, Barrett NS (1997) Short term monitoring of biotic change in Tasmanian marine reserves. *Journal of Experimental Marine Biology and Ecology* 213:261-279
53. Edgar GJ, Barrett NS (1999) Effects of the declaration of marine reserves on Tasmanian reef fishes, invertebrates and plants. *Journal of Experimental Marine Biology and Ecology* 242:107-144
54. Barrett NS, Buxton CD, Edgar GJ (2009) Changes in invertebrate and macroalgal populations in Tasmanian marine reserves in the decade following protection. *Journal of Experimental Marine Biology and Ecology* 370:104-119
55. Micheli F et al. (2012) Evidence that marine reserves enhance resilience to climatic impacts. *PLoS ONE* 7(7): e40832
56. Sáenz-Arroyo A. et al. (2012) Proyecto de reservas marinas Isla Natividad, BCS, Mexico. Final Report, 48 pp.
57. Shears NT (2010) Long Bay Marine Monitoring Program: 1999-2010. Prepared by Auckland UniServices for Auckland Regional Council. Auckland Regional Council Technical Report
58. Shears NT, Babcock RC (2007) Quantitative description of mainland New Zealand's shallow subtidal reef communities. *Science for Conservation* 280: 126p.
59. Shears NT, Babcock RC (2003) Continuing trophic cascade effects after 25 years of no-take marine reserve protection. *Mar Ecol Prog Ser* 246: 1-16
60. Derrien-Courtel S (2008) L'étude des peuplements subtidaux rocheux (flore et faune) du littoral breton permet-elle de contribuer à l'évaluation de la qualité écologique du littoral et d'en mesurer les changements dans le temps ? Thèse de l'Ecole doctorale du Muséum « Sciences de la Nature et de l'Homme », Concarneau, France, p. 222.
61. Derrien-Courtel S, Le Gal A, Grall J (2013) Regional-scale analysis of subtidal rocky shore community. *Helgol Mar Res* 67:697-712

62. Le Gal A, Derrien-Courtet S (2015) Quality Index of Subtidal Macroalgae (QISubMac), a suitable tool for ecological quality status assessment under the scope of the European Water Framework Directive. *Mar Poll Bull* 101:334-349
63. Wernberg T. et al. (2013) An extreme climatic event alters marine ecosystem structure in a global biodiversity hotspot. *Nature Climate Change*, 3:78–82
64. Norderhaug KM et al. (2015) Combined effects from climate variation and eutrophication on the diversity in hard bottom communities on the Skagerrak coast 1990-2010. *Mar Ecol Prog Ser* 530: 29–46
65. Norderhaug KM et al. (2011) Long-term monitoring of environmental quality in the coastal regions of Norway. Klif report TA-2777. 115 pp.
66. Perez Matus A, Ferry-Graham L , Cea A, Vásquez JA (2007) Community structure of temperate reef fishes in kelp-dominated subtidal habitats of northern Chile. *Mar Fresh Res* 58: 1069–1085.
67. Buschmann AH et al. (2014) Ecophysiological plasticity of annual populations of giant Kelp (*Macrocystis pyrifera*) in a seasonally variable Coastal environment in the Northern Patagonian Inner Seas of Southern Chile. *J Appl Phycol* 26:837-847
68. Edmunds M, Hart S (2003) Parks Victoria Standard Operating Procedure. Biological Monitoring of Subtidal Reefs. *Parks Victoria Technical Series* 9:1-48
69. Connell SD et al. (2008) Recovering a lost baseline: missing kelp forests from a metropolitan coast. *Mar Ecol Prog Ser* 360: 63–72
70. Norderhaug KM et al. (2012) Miljøovervåking av sukkertare lang kysten. Sugar kelp monitoring programme. Yearly KLIF report. 47 pp.
71. Moy FE, Christie H (2012) Large-scale shift from sugar kelp (*Saccharina latissima*) to ephemeral algae along the south and west coast of Norway. *Mar Biol Res* 8:309-321
72. Åsen PA (2006) Marine macroalgae vegetation from Kristiansandsfjorden to Jøssingfjorden _with special referencesto *Laminaria saccharina* and *Alaria esculenta*. Agder naturmuseums rapportserie 2006-4. 35 pages.